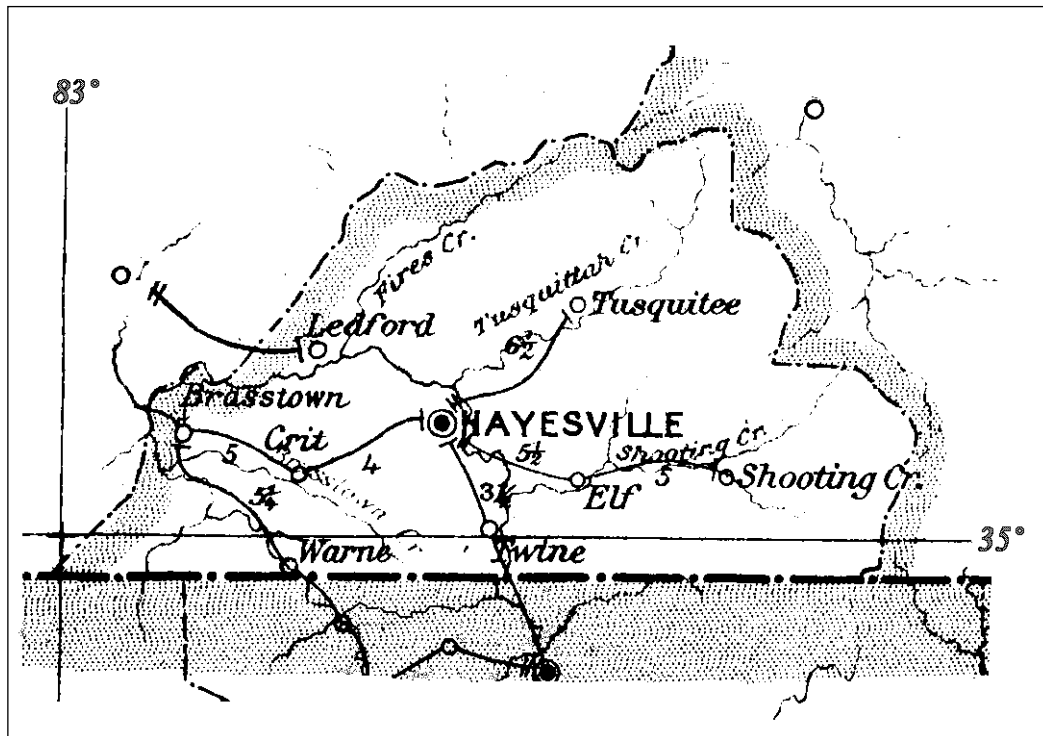


CLAY COUNTY

Established 20 February 1861
From Cherokee County

Number of Post Offices - 22
Number with postmarks known - 10



CLAY COUNTY

Belzora

(Clay)

Caleb F. Neal 29 Jul 1893
 Andrew J. Green 31 Jan 1895
 Discontinued 23 Jun 1896
 Papers to Ballew, Cherokee County

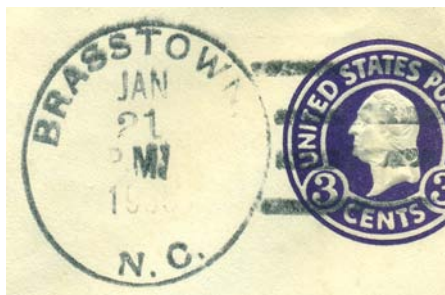
Brasstown, from Cherokee County

(Clay)

Lee Baker 15 Jul 1889
 John H. Brendle 11 Dec 1890
 Sarah E. Brendle 10 May 1895
 James F. Arrant 10 Nov 1897
 Noria V. Arrant 11 Nov 1903
 Merritt A. Hampton 23 Jan 1909
 Fred O. Scroggs 13 Sep 1913
 Bessie Scroggs 23 Sep 1914
 Julia M. Ledford 28 Aug 1919
 Mrs. Iowa Green, Acting 16 Mar 1925
 Mrs. Iowa Green 25 Apr 1925
 Margie P. Payne, Acting 30 Jun 1955
 Herman N. Wilson, Acting 14 Apr 1961
 Herman N. Wilson 31 Aug 1961
 Frederick L. Anderson 25 Jun 1983
 Ronald Glenn Story Officer-In-Charge 13 Mar 1987
 Jewell M. Bowles 20 Jun 1987
 Thomas E. Wimpey Officer-In-Charge 4 May 1993
 Thomas E. Wimpey 11 Dec 1993
 Robert L. Hughes 30 Apr 2005



Type 1
 32.5 mm Black
 Doane Type 3-2
 15 Feb 1907
 3 Aug 1912



Type 2
 34 mm Black
 1931 Type C/2 4-Bar
 21 Jan 1935



Type 3
 33 mm Black
 1936 Type F/1 4-Bar
 13 Oct 1940
 19 Apr 1951

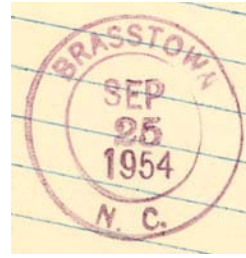


Type 4
 33 mm Black
 1936 Type F/1 4-Bar
 23 Jan 1954
 18 Oct 1955

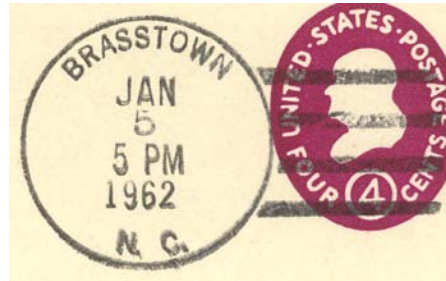
CLAY COUNTY

Brasstown (Cont.)

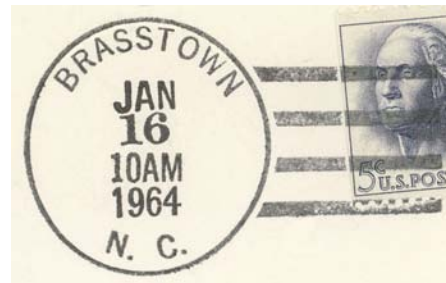
(Clay)



Type 5
29.5 mm Magenta
25 Sep 1954



Type 6
33.5 mm Black
1936 Type F/1 4-Bar
5 Jan 1962



Type 7
33.5 mm Black
1936 Type F/1 4-Bar
30 Nov 1963
16 Jan 1964



Type 8
33.5 mm Black
1963 Type F/2 4-Bar (28902)
29 Nov 1965



Type 9
31 mm Black
1963 Type F/2 4-Bar (28902)
6 Dec 1966
14 Jan 1975

CLAY COUNTY

Brasstown (Cont.)

(Clay)



Type 10
34 mm Black
Self-Inking Postmarker
Type 4A (28902)
8 Mar 1995
4 May 1995



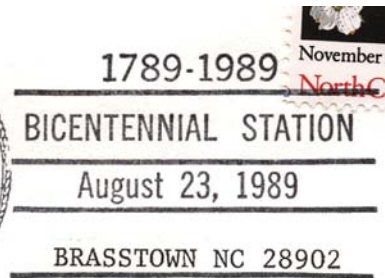
Type 11
38.5 mm Black
Self-Inking Postmarker (28902)
2 Dec 2003



Type 12
29.5 mm Red
Self-Inking Postmarker (28902)
7 Sep 2006

Temporary Station Cancels

Bicentennial Station



Type 1
86 x 37 mm Black
(28902)
(Post office name typed in)
23 Aug 1989

CLAY COUNTY

Clarence

(Clay)

Elbert V. McConnell 14 Aug 1901
Discontinued 14 Oct 1905
Mail to Hayesville



Type 1
28 mm Black
16 Apr 1904
11 Feb 1905

Corundum

(Clay)

Rufus A. Bingham 7 Jan 1903
John W. Chambers 18 Jan 1904
William H. Ghormley 8 Feb 1905
Discontinued 31 Mar 1905
Mail to Shooting Creek

Crit

(Clay)

William H. H. Howard 27 Jul 1898
Emma C. Lovin 3 Jan 1901
Thomas B. Passmore 14 Aug 1903
Cordie A. Padgett 31 Mar 1905
Discontinued 15 Jun 1906
Mail to Hayesville

Cullakanee

(Clay)

Elizabeth L. Passmore 7 Jan 1889
John Reaves 15 Mar 1890
Discontinued 8 Oct 1890
Papers to Shooting Creek

CLAY COUNTY

Elf

(Clay)

Bascome A. Ledford	31 Jul 1883
Lawrence C. Patton	4 Oct 1883
W. B. Pass	27 Apr 1885
Luther S. Ledford	11 Dec 1885
Discontinued	3 May 1886
Papers to Shooting Creek	
Harrison S. Black	12 Jun 1888
George M. Johnson	17 Sep 1889
W. A. Loyd	18 Oct 1893
Order rescinded	23 Jun 1894
George M. Johnson continued	23 Jun 1894
Helen A. Lance	6 Mar 1895
Hattie Ledford	14 Jan 1898
Sallie B. Ledford	3 Jan 1899
John W. Ledford	3 Jan 1901
Royal J. Buchanan	17 Mar 1902
John B. White	15 Aug 1904
Lena White	7 Aug 1905
James W. Penland	12 Dec 1908
Iola Penland	14 Sep 1909
Discontinued	31 Dec 1911
Mail to Hayesville	



Type 1
27 mm Black
21 Mar 1899

Fort Humbee, from Cherokee County

(Clay)

Robert B. Chambers, CSA	26 Nov 1861
CSA office closed on or before	30 Apr 1865
Federal office discontinued	6 Dec 1866

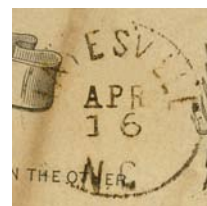


Manuscript
3 Oct 186x

Hayesville, formerly Fort Humbee

(Clay)

John W. Duncan	7 May 1868
Jacob Brooks	18 Aug 1870
William H. McClure	6 Jan 1873
Lucius H. McClure	14 Jan 1875
William B. Pass	3 May 1878
Green H. Haigler	8 Jul 1884
A. B. Ledford	17 May 1889
James F. Shearer	17 Jul 1889
Alexander B. Ledford	6 Oct 1890
Green H. Haigler	22 May 1893
George M. Johnson	2 Jun 1897
Edna J. Anderson	24 Feb 1904
Everette R. Crawford	24 Jun 1914
John A. Chambers, Acting	15 Jul 1924
John A. Chambers	26 Jan 1925



Type 1
24 mm Black
16 Apr 1878



Type 2
26.5 mm Black
24 Oct 189x
1893

CLAY COUNTY

Hayesville (Cont.)

(Clay)

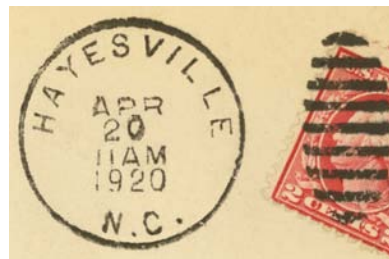
Frederick R. Jones	1 Feb 1934
Ruel P. White, Acting	30 Jun 1956
Willis Q. Moore, Acting	7 Feb 1961
Willis Q. Moore	21 Sep 1961
Howard C. Martin	22 Nov 1975
Melvin R. Frye Officer-In-Charge	20 Aug 1982
William A. Braisted	8 Jan 1983
Douglas E. Hughey Officer-In-Charge	8 Oct 1986
Fredrick Lynwood Anderson	28 Feb 1987
Robert L. Hughes Officer-In-Charge	11 Aug 1994
Robert L. Hughes	15 Oct 1994
Kevin C. Claus Officer-In-Charge	29 Apr 2005
Kevin C. Claus	23 Jul 2005
Judy G. Paxton Officer-In-Charge	1 Jun 2007
Cheryl E. Stewart Officer-In-Charge	4 Feb 2008
Cheryl E. Stewart	5 Jul 2008



Type 3
27.5 mm Black
31 Dec 1897
6 Aug 1900



Type 4
30 mm Black
Metal Duplex Type H2
20 Apr 1903
4 Dec 1912



Type 5
29 mm Black
Metal Duplex Type H2
20 Apr 1920
17 Jan 1922



Type 6
26 mm Black
Metal Duplex Type E2
14 Aug 1923



Type 7
32.5 mm Black
1925 Type C/1 4-Bar
4 Apr 1936

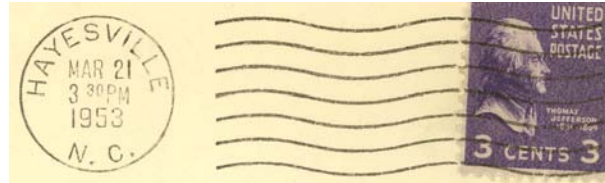
CLAY COUNTY

Hayesville (Cont.)

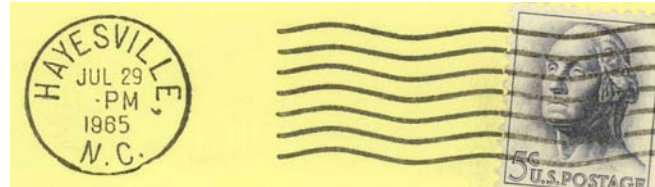
(Clay)



Type 8
29 mm Black
Metal Duplex Type H2
16 Oct 1937
8 Feb 1939



Type 9
20.5 mm Black
Universal Machine
Type DT 200
15 Apr 1943
4 Jun 1963



Type 10
21.5 mm Black
International Machine
Type J30
20 Jan 1964
29 Jul 1965



Type 11
21.5 mm Black
International Machine
Type J30 (28904)
1 Oct 1965
1 May 1991



Type 12
33 mm Black
1963 Type F/2 4-Bar (28904)
5 Apr 1976

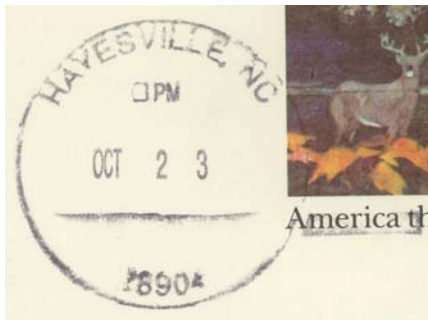


Type 13
32.5 mm Black
1963 Type F/2 4-Bar (28904)
8 Apr 1981

CLAY COUNTY

Hayesville (Cont.)

(Clay)



Type 14
38 mm Black
Self-Inking Postmarker (28904)
4 Nov 1991
23 oct 199x



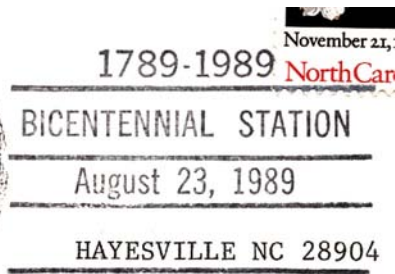
Type 15
27.5 mm Red
Self-Inking Postmarker (28904)
24 Nov 2003



Type 16
33.5 mm Red
Self-Inking Postmarker (28904)
17 Nov 2006

Temporary Station Cancels

Bicentennial Station



Type 1
86 x 37 mm Black
(28904)
(Post office name typed in)
23 Aug 1989

Receiving datestamp



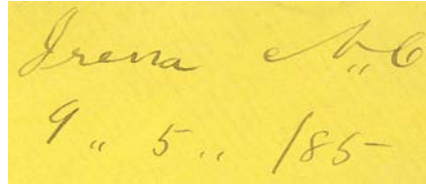
Type R1
28 mm Black
3 Oct 1899
10 Apr 1907

CLAY COUNTY

Irena

(Clay)

Alexander B. Ledford	14 May 1884
Wilson S. Ledford	26 Jan 1888
Discontinued	21 Sep 1894
Mail to Tusquitee	
Thomas C. Melton	28 Jun 1901
Jiles A. Mosteller	8 Mar 1902
Norman A. Mosteller	31 Aug 1903
Flora Davi	31 Dec 1904
Discontinued	15 Mar 1907
Mail to Hayesville	



Manuscript
5 Sep 1885



Type 1
29 mm Black
25 Oct 1901
5 Nov 1901

Ledford

(Clay)

David A. Ledford	12 Sep 1889
William T. Robinson	13 Aug 1895
Robert L. Brown	26 Mar 1901
James V. Curtis	2 Oct 1902
Discontinued	30 Sep 1905
Mail to Hayesville	

Lick Log Creek

(Clay)

Henry Ledford	15 Nov 1875
William M. Davis	31 Jan 1877
John H. Moore	20 Jun 1881
Discontinued	10 Feb 1882

Mayflower

(Clay)

Alexander B. Ledford	18 Mar 1902
Discontinued	31 Oct 1905
Mail to Hayesville	

CLAY COUNTY

Ogden

(Clay)

Robert L. Anderson 23 May 1903
Discontinued 31 Aug 1929
Mail to Brasstown



Type 1
33 mm Magenta
1910 Type B 4-Bar
31 Aug 1929

Pinelog

(Clay)

William T. Cabe 1 Apr 1903
Missouria Ditmore 26 Apr 1904
Hattie Bell 21 Mar 1905
Discontinued 31 Jan 1906
Mail to Brasstown

Shearer

(Clay)

Laura B. Shearer 22 May 1901
Discontinued 14 May 1904
Papers to Tusquite

Shooting Creek

(Clay)

John M. Galloway 24 Jun 1875
James D. McClure 7 Feb 1889
Zoah McClur 31 Jan 1914
Hassey R. Rogers 4 Jan 1918
John M. Tiger, Acting 13 Jun 1925
Carrie Tiger, Acting 16 Oct 1930
Carrie Tiger 14 Nov 1930
Neal Rogers, Acting 22 Dec 1934
Neal Rogers 9 Apr 1935
Discontinued 28 Feb 1955
Mail to Hayesville



Type 1
28 mm Black
25 Aug 1893
30 Mar 1895

Type 2
28 mm Black
Doane Type 2-1
3 Apr 1908
5 Jun 1908

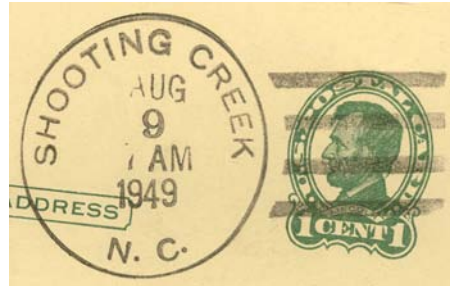
CLAY COUNTY

Shooting Creek (Cont.)

(Clay)



Type 3
33 mm Black
1925 Type C/1 4-Bar
9 Nov 1935



Type 4
33 mm Black
1936 Type F/1 4-Bar
7 Nov 1944
28 Feb 1955

Snowbird*

(Clay)

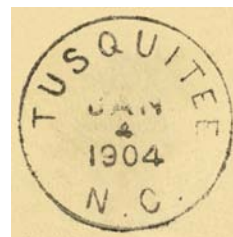
David E. Coleman	6 May 1901
Discontinued	14 Oct 1905
Mail to Hayesville	

** Name mistakenly spelled "Shewbird" in POD records*

Tusquitee, from Cherokee County

(Clay)

John H. Johnson, CSA	1 Aug 1861
CSA office closed on or before	30 Apr 1865
Federal office discontinued	11 Dec 1866
Thomas J. Johnson	16 Jan 1868
Discontinued	9 Nov 1870
Sallie Johnson	3 Jun 1872
Thomas J. Johnson	22 Feb 1877
Ora Moss	11 Sep 1897
Discontinued	28 Feb 1907
Mail to Hayesville	



Type 1
28 mm Black
4 Jan 1904

CLAY COUNTY

Tusquitee Vale

(Clay)

James W. Shearer	30 Aug 1872
Discontinued	23 Jul 1874

Twine

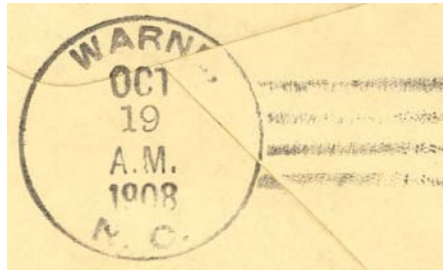
(Clay)

Lucius H. McClure	21 Oct 1889
Clara E. McClure	10 Feb 1899
Donnie McClure	27 Jan 1914
Donnie Herbert	6 Jan 1917
Discontinued	31 Oct 1918
Mail to Hayesville	

Warne

(Clay)

George T. Hine	22 Jun 1887
Thomas P. Kimsey	12 Feb 1890
Carson A. Webb	4 Sep 1891
William Hooper	10 Aug 1896
John O. Nichols	12 Jun 1897
William C. Parsons	31 Jan 1907
John Hampton	8 Nov 1907
Florence Herbert	13 Mar 1908
Claude A. Moore, Acting	22 Dec 1943
Claude A. Moore	28 Apr 1945
Robert L. Hughes	29 Oct 1983
Shirley R. Hall Officer-In-Charge	5 May 1993
Richard Keith Barnard	22 Jan 1994
Shirley R. Hall Officer-In-Charge	2 Sep 1999
Karen E. Watson	7 Oct 2000
Cheryl Stewart Officer-In-Charge	16 Dec 2003
Connie S. C. Gabrielli	26 Jun 2004
Converted to Remotely Managed Post Office under Hayesville	17 Nov 2012



Type 1
32.5 mm Black
1908 Type A/2 4-Bar
19 Oct 1908
22 Dec 1909

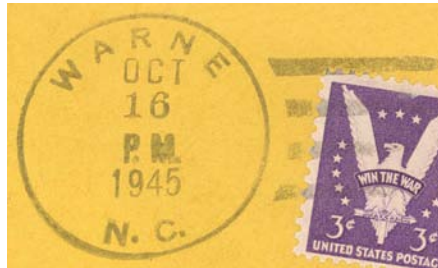


Type 2
32.5 mm Black
1910 Type B 4-Bar
17 Jul 1914

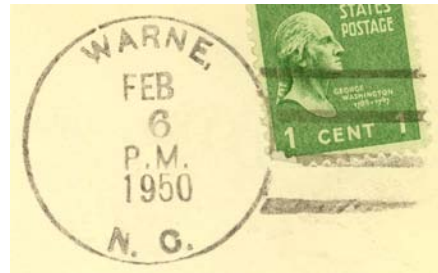
CLAY COUNTY

Warne (Cont.)

(Clay)



Type 3
33 mm Black
1936 Type F/1 4-Bar
16 Oct 1945



Type 4
33 mm Black
1936 Type F/1 4-Bar
16 Jan 1950
21 Jan 1953



Type 5
33 mm Black
1936 Type F/1 4-Bar
3 Jul 1956



Type 6
32.5 mm Black
1936 Type F/1 4-Bar
6 Jan 1960



Type 7
34 mm Black
1936 Type F/1 4-Bar
14 Jan 1965

CLAY COUNTY

Warne (Cont.)

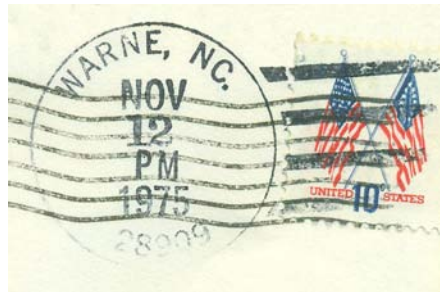
(Clay)



Type 8
33 mm Black
1963 Type F/2 4-Bar (28909)
30 Mar 1966
18 Jun 1966



Type 9
32 mm Black
1963 Type F/2 4-Bar (28909)
29 Aug 1969
22 Feb 1972



Type 10
32.5 mm Black
1963 Type F/2 4-Bar (28909)
12 Nov 1975



Type 11
31.5 mm Black
Self-Inking Postmarker
Type 2A (28909)
17 Dec 1985
18 Jul 1989



Type 12
31.5 mm Black
Self-Inking Postmarker (28909)
13 Sep 1990

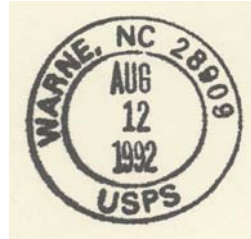
CLAY COUNTY

Warne (Cont.)

(Clay)



Type 13
30.5 mm Black
Self-Inking Postmarker
Type 3B (28909)
12 Mar 1992
5 May 1995



Type 14
28 mm Black
Self-Inking Postmarker (28909)
12 Aug 1992



Type 15
34 mm Black
Self-Inking Postmarker
(28909-9998)
24 Nov 2003



Type 16
30.5 mm Red
Self-Inking Postmarker (28909)
24 Nov 2003



Type 167
44 mm Red
Self-Inking Postmarker
(28909-8889)
27 Mar 2007

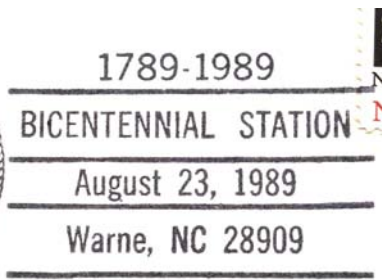
CLAY COUNTY

Hayesville (Cont.)

(Clay)

Temporary Station Cancels

Bicentennial Station



Type 1
86 x 37 mm Black
(28909)
23 Aug 1989