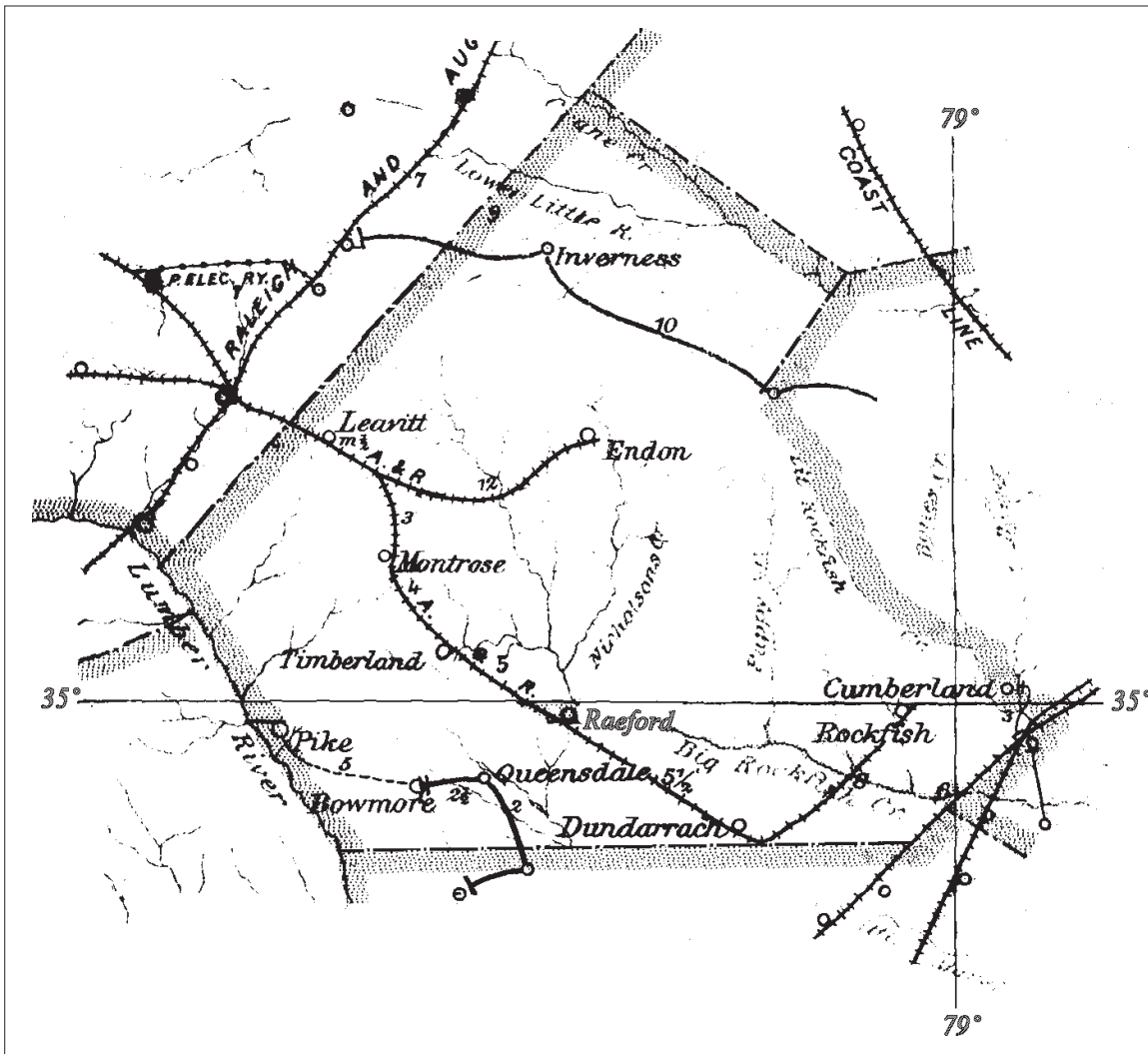
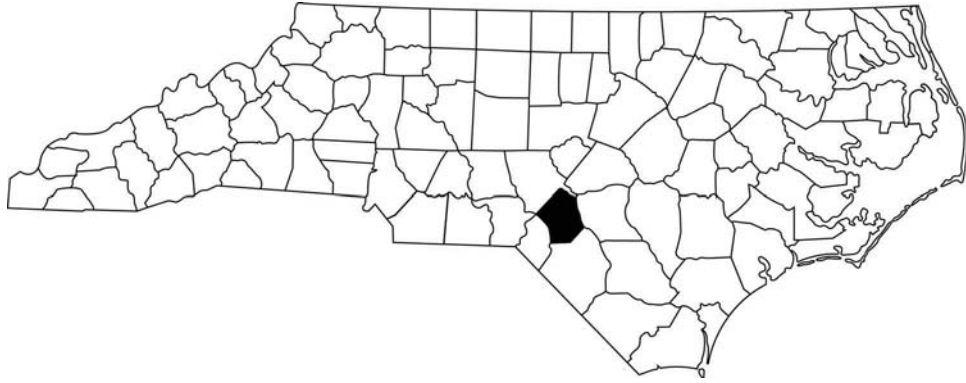


# HOKE COUNTY

Formed on 17 February 1911 from Cumberland and Robeson

Number of Post Offices - 11  
Number with postmarks known - 8



## HOKE COUNTY

### Argyle, from Cumberland County

(Hoke)

Archie B. McFadyen 17 Feb 1911  
 Discontinued 15 Aug 1918  
 Mail to Manchester, Cumberland County

### Ashley Heights

(Hoke)

Duncan H. Johnson 3 Apr 1919  
 Myrtie L. Johnson, Acting 20 Apr 1938  
 Myrtie L. Johnson 23 May 1938  
 Discontinued 31 May 1953  
 Mail to Aberdeen, Moore County



Type 1  
 32.5 mm Black  
 1925 Type C1 4-Bar  
 26 May 1932  
 14 Dec 1935



Type 2  
 33.5 mm Black  
 1936 Type F/1 4-Bar  
 30 May 1953  
 31 May 1953

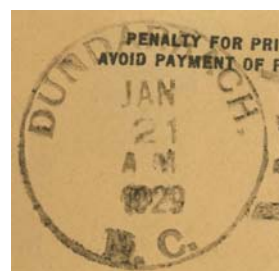
### Dundarrach, from Robeson County

(Hoke)

Luther A. McInnis 17 Feb 1911  
 Alexander McMillan 2 May 1911  
 James B. McKenzie, Acting 15 Sep 1923  
 James B. McKenzie 29 Aug 1923  
 Luther A. McInnis, Acting 14 Aug 1928  
 Luther A. McInnis 8 Sep 1928  
 Discontinued 30 Jun 1932  
 Mail to Shannon, Robeson County



Type 1  
 32.5 mm Black  
 1910 Type B 4-Bar  
 27 Jun 1913



Type 2  
 33 mm Black  
 1925 Type C/1 4-Bar  
 21 Jan 1929

## HOKE COUNTY

### Inverness, from Cumberland County

(Hoke)

John H. Priest                    17 Feb 1911  
 Discontinued                 15 Nov 1912  
 Mail to Manly, Moore County

### Leavitt, from Cumberland County

(Hoke)

George D. Sayer                17 Feb 1911  
 Discontinued                 15 Mar 1912  
 Mail to Aberdeen, Moore County

### Lobelia, from Cumberland County

(Hoke)

Daniel McGill                 17 Feb 1911  
 John W. Smith                3 Sep 1912  
 Discontinued                 31 Mar 1919  
 Mail to Vass, Moore County

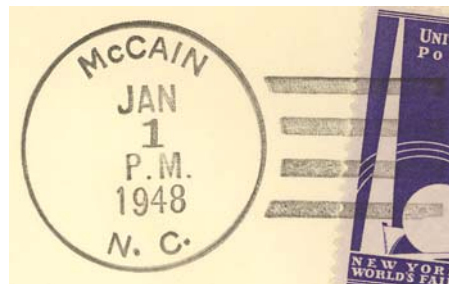


Type 1  
 29 mm Black  
 9 Mar 1912

### McCain, name changed from Sanatorium

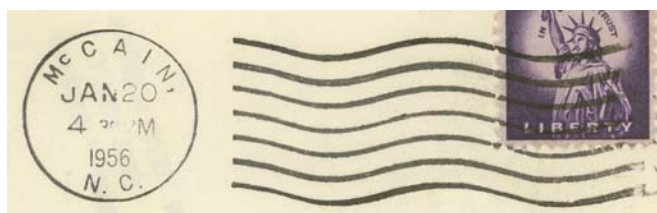
(Hoke)

Ernest B. Satterwhite	1 Jan 1948
Irene E. Isreal, Acting	23 Sep 1961
Eli Britton Jr. Officer-In-Charge	23 Jan 1976
Edna S. Williamson Officer-In-Charge	5 Nov 1976
Alvin T. Terry	13 Aug 1977
Edna S. Williamson Officer-In-Charge	30 Dec 1977
Mrs. Janice H. Mobley	15 Jul 1978
Cyrus B. Israel Officer-In-Charge	1 Oct 1982
Discontinued	17 Mar 1984



Type 1  
 32.5 mm Black  
 1936 Type F/1 4-Bar  
 1 Jan 1948

Became Community Post Office of Raeford

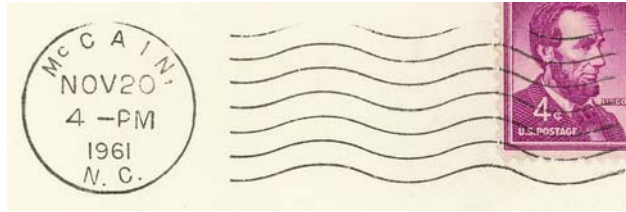


Type 2  
 23 mm Black  
 International Machine  
 Type AT/S 2711  
 5 Mar 1948  
 20 Jan 1956

# HOKE COUNTY

McCain (Cont.)

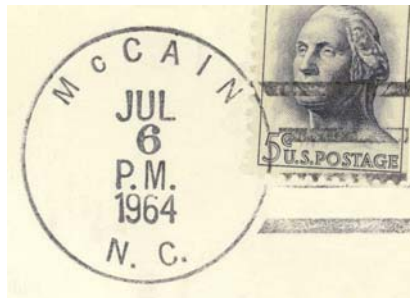
(Hoke)



Type 3  
23 mm Black  
International Machine  
Type AT/S 2721  
23 Jan 1959  
20 Nov 1961



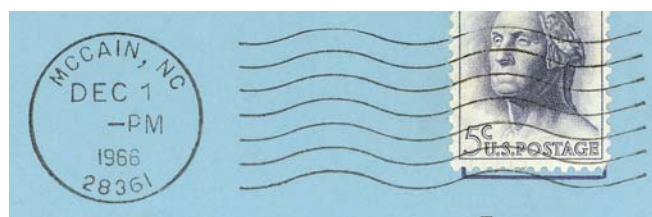
Type 4  
33 mm Black  
1936 Type F/1 4-Bar  
10 Jan 1963



Type 5  
33.5 mm Black  
1936 Type F/1 4-Bar  
6 Jul 1964



Type 6  
34 mm Black  
1963 Type F/2 4-Bar (28361)  
27 May 1965



Type 7  
23 mm Black  
International Machine  
Type AT/S/z 2721 (28361)  
1 Aug 1966  
14 Jul 1983

# HOKE COUNTY

## McCain (Cont.)

(Hoke)



Type 8  
32.5 mm Black  
1963 Type F/2 4-Bar (28361)  
28 May 1975

## Raeford, from Cumberland County

(Hoke)

Anne C. Currie, Acting	17 Feb 1911
Neill McFayden	23 Feb 1911
Lacy M. Clark	25 Feb 1915
Lacy F. Clark	28 Jul 1919
George W. Cox, Acting	1 Aug 1923
George W. Cox	19 Dec 1923
Lacy F. Clark, Acting	22 Apr 1936
Lacy F. Clark	13 May 1936
Charles E. Morrison, Acting	17 Dec 1952
Daniel C. Cox, Sr., Acting	30 Apr 1953
Daniel C. Cox, Sr.	18 Mar 1954
Charles Edward Morrison, Acting	8 Nov 1963
Charles Edward Morrison	19 Aug 1964
James G. Dunnagan Officer-In-Charge	1 Dec 1974
Joseph D. Carver	26 Apr 1975
Greg Rhiner Officer-In-Charge	20 Jan 1987
Clara B. Robinson	9 May 1987
Clara B. Hurte (marriage)	4 Apr 1992
Clara B. Robinson	12 Dec 1992
Officer-In-Charge	
Louis Steve Holden	14 Sep 1996
Christa N. Engle	14 Jul 2001
Alice C. Roache Officer-In-Charge	27 Jan 2006
Michael Lee Sharp Officer-In-Charge	17 Jul 2006
Michael Lee Sharp	3 Feb 2007
Kathy McGirt Officer-In-Charge	14 Jan 2008
Wanda G. Marvell	11 Oct 2008



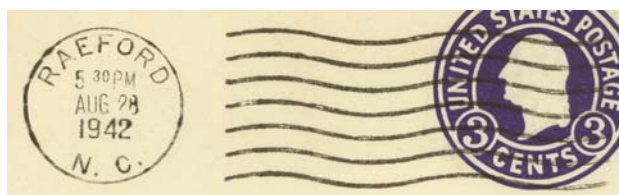
Type 1  
30 mm Black  
Metal Duplex Type H2  
17 Sep 1911  
15 Sep 1915



Type 2  
23 mm Black  
Columbia Machine  
Type G 1W  
26 Mar 1927  
23 Mar 1942



Type 3  
30 mm Black  
Metal Duplex Type H2  
9 May 1928  
7 Oct 1942



Type 4  
21 mm Black  
Universal Machine  
Type DT 200K  
28 Aug 1942  
9 Mar 1951



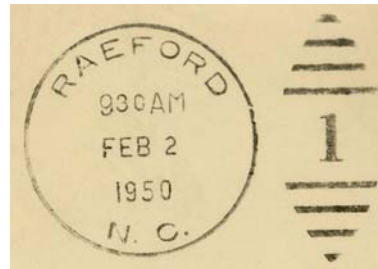
# HOKE COUNTY

Raeford (Cont.)

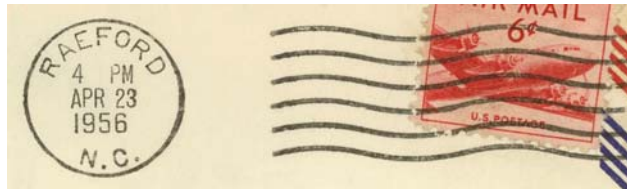
(Hoke)



Type 5  
29.5 mm Magenta  
23 Jan 1950  
29 Sep 1954



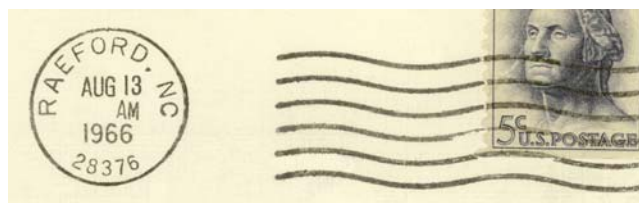
Type 6  
30.5 mm Black  
Metal Duplex Type ?  
2 Feb 1950  
2 Nov 1962



Type 7  
21 mm Black  
Universal Machine  
Type DT 300  
7 Oct 1953  
21 Oct 1960



Type 8  
32 mm Black  
Hanley hand-held roller  
6 Dec 1965



Type 9  
21 mm Black  
Universal Machine  
Type DTS/z 300 (28376)  
13 Aug 1966  
12 Jun 1967

# HOKE COUNTY

Raeford (Cont.)

(Hoke)



Type 10  
32.5 mm Black  
1963 Type F/2 4-Bar (28376)  
15 Apr 1971  
22 Aug 1974



Type 11  
28.5 mm Red  
Self-Inking Postmarker (28376)  
12 Oct 1990



Type 12  
38 mm Red  
Self-Inking Postmarker (28376)  
13 Apr 1991



Type 13  
28.5 mm Red  
Self-Inking Postmarker (28376)  
20 Sep 1993



Type 14  
44.5 mm Red  
Self-Inking Postmarker  
(28376-9998)  
27 Feb 2003

# HOKE COUNTY

## Raeford (Cont.)

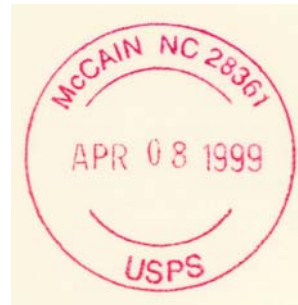
(Hoke)

### Rural Station Cancels

McCain Contract Post Office  
 17 Mar 1984  
 19 Aug 2002



Type 1  
 29 mm Magenta  
 20 Aug 1985  
 14 Apr 1992



Type 2  
 35.5 mm Red  
 Self-Inking Postmarker (28361)  
 8 Apr 1999

## Rockfish, from Cumberland County

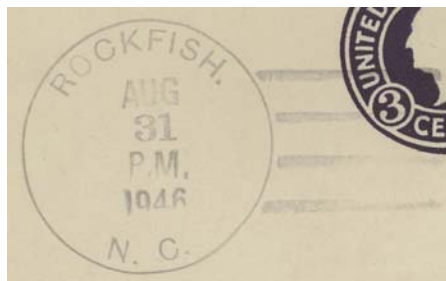
(Hoke)

Mary H. Boseman	17 Feb 1911
Isabel R. Ritter, Acting	1 May 1942
Isabel R. Ritter	18 Jul 1942
Discontinued	30 Jun 1943
Lillie Wood, Acting	15 Jul 1943
Lillie Wood	9 Nov 1943
Discontinued	31 May 1953

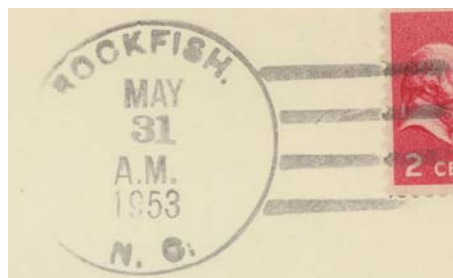
Mail to Fayetteville, Cumberland County



Type 1  
 32.5 mm Black  
 1910 Type B 4-Bar  
 21 Jun 1916



Type 2  
 33.5 mm Black  
 1936 Type F/1 4-Bar  
 31 Aug 1946  
 22 Nov 1949



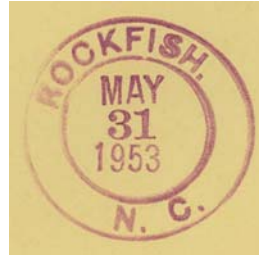
Type 3  
 33 mm Black  
 1936 Type F/1 4-Bar  
 31 May 1953



# HOKE COUNTY

## Rockfish (Cont.)

(Hoke)



Type 4  
30 mm Magenta  
31 May 1953

## Sanatorium

(Hoke)

Hughes B. Hoyle	22 Apr 1914
James W. Reid	28 Dec 1914
Lewis B. McBrayer	25 May 1915
Herbert O. Sink, Acting	1 Feb 1924
Herbert O. Sink	22 Apr 1924
Ernest B. Satterwhite, Acting	11 Jun 1926
Ernest B. Satterwhite	14 Dec 1926
Name changed to <b>McCain</b>	1 Jan 1948



Type 1  
31.5 mm Black  
Metal Duplex  
Type Scarab  
20 Jan 1925



Type 2  
22 mm Black  
Columbia Machine  
Type G 2W  
27 Feb 1920  
14 Jun 1920



Type 3  
23 mm Black  
International Machine  
Type AT/S 2711  
9 Jan 1939  
9 Mar 1942



Type 4  
34.5 mm Black  
1936 Type F/1 4-Bar  
17 Oct 1942  
23 Oct 1943

## HOKE COUNTY

### Sanatorium (Cont.)

(Hoke)



Type 5  
33 mm Black  
1936 Type F/1 4-Bar  
31 Dec 1947

### Timberland, from Cumberland County

(Hoke)

Neill A. McDonald	17 Feb 1911
Minnie B. McDonald, Acting	1 Feb 1940
Minnie B. McDonald	4 Nov 1940
Discontinued	31 Dec 1948
Mail to Raeford	



Type 1  
32 mm Black  
1910 Type B 4-Bar  
3 Jul 1917



Type 2  
34 mm Black  
1931 Type C/2 4-Bar  
12 Aug 1938  
30 Oct 1941



Type 3  
34 mm Black  
1936 Type F/1 4-Bar  
31 Dec 1948