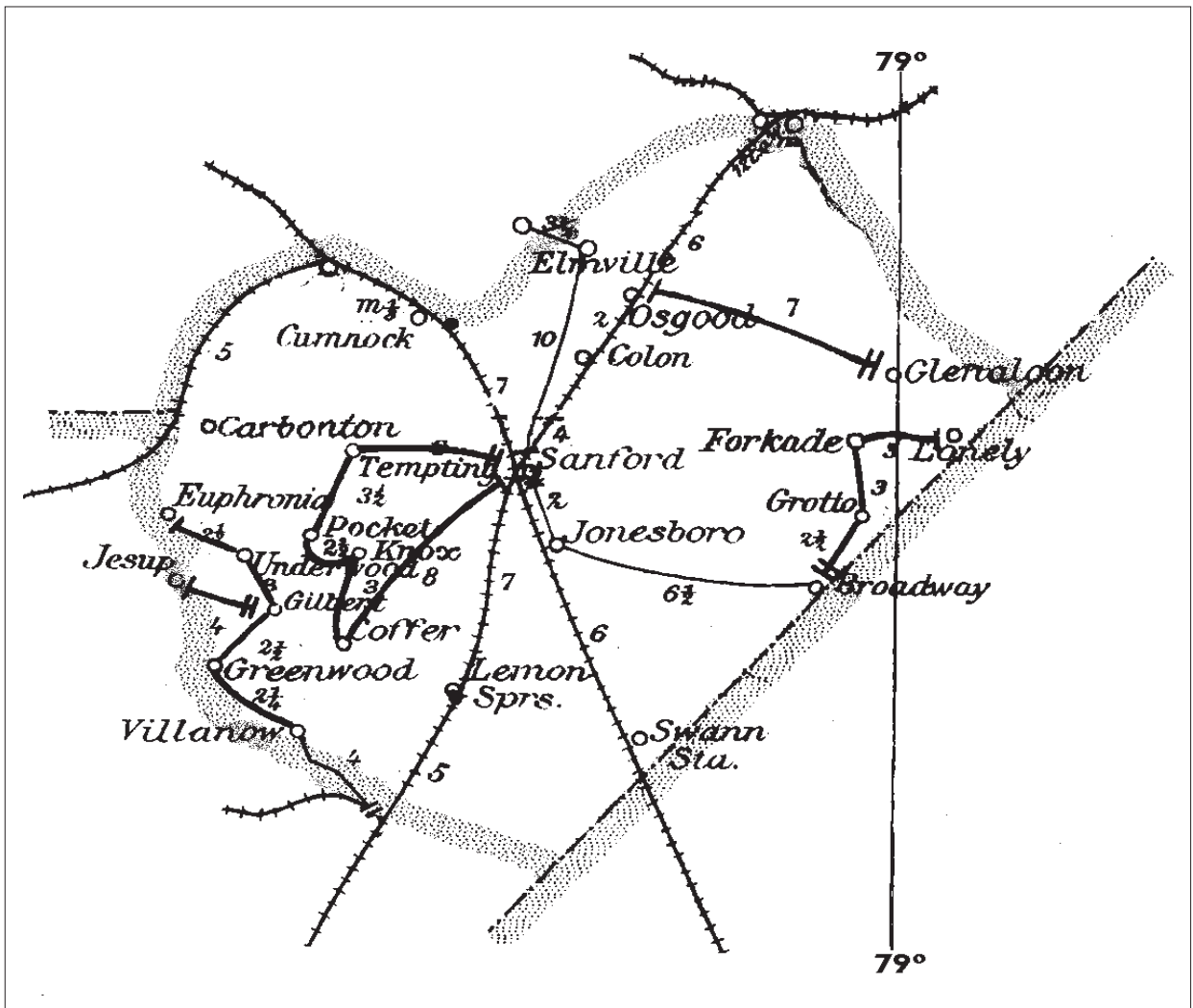
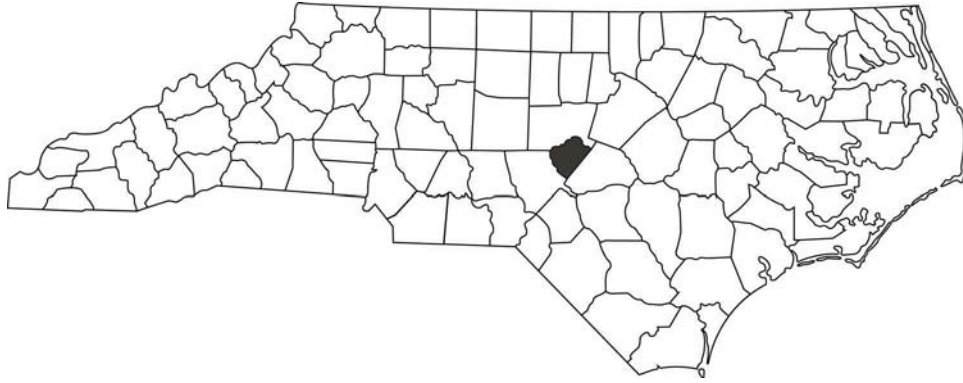


# LEE COUNTY

Formed in 1908 from Chatham and Moore

Number of Post Offices - 9  
Number with postmarks known - 7

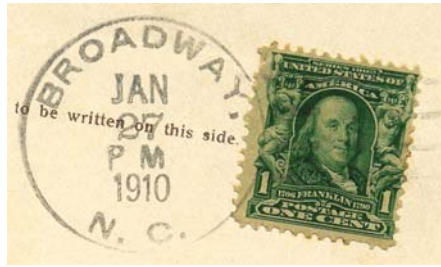


# LEE COUNTY

## Broadway, from Moore County

(Lee)

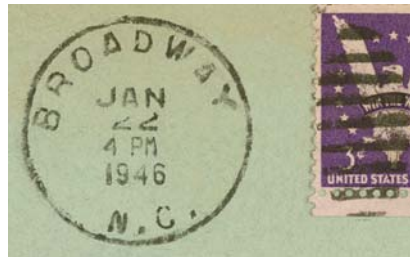
James A. McNeill	1 Apr 1908
Julian D. Thomas	9 Apr 1914
Bertha J. Harrington (declined)	21 Sep 1917
Conrad E. Thomas	7 Oct 1917
Ilene Sloan	30 Jan 1924
Ilene Bowling (marriage)	4 Jan 1925
Laura E. Rosser, Acting	10 Jun 1932
Mrs Robbie J. McNeill	19 Oct 1932
Clara B. Rosser	1 Nov 1933
Leon Lewis Kelly, Acting	1 Feb 1938
Preston L. Morris	10 Jun 1938
Doris I. Cameron, Acting	25 Jan 1966
Doris I. Cameron	18 Aug 1966
Daniel C. Burch Sr.	15 Nov 1980
Danny Holland Officer-In-Charge	1 Aug 1987
Marvin T. Davis	21 Nov 1987
Ricky T. Rook Officer-In-Charge	1 Jun 1989
Dale R. Mancuso Officer-In-Charge	30 Sep 1989
Bobby Earl Hinton	16 Dec 1989
Jennifer Cummings Officer-In-Charge	7 Jan 2003
Teresa W. McMillian Officer-In-Charge	29 Jan 2003
Jennifer Cummings Officer-In-Charge	26 Jul 2003
Teresa W. McMillian	1 Nov 2003
Veronica C. Blegen Officer-In-Charge	1 Feb 2005
Teresa Perdue Officer-In-Charge	22 Feb 2006
Veronica C. Blegen Officer-In-Charge	12 Feb 2007
Veronica C. Blegen	17 Feb 2007
Veronica D. Coy (name changed)	25 Sep 2007
Veronica D. Coy-Sayre (marriage)	6 Aug 2010.



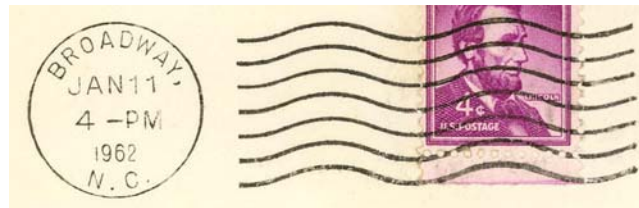
Type 1  
31.5 mm Black  
1908 Type A/2 4-Bar  
27 Jan 1910



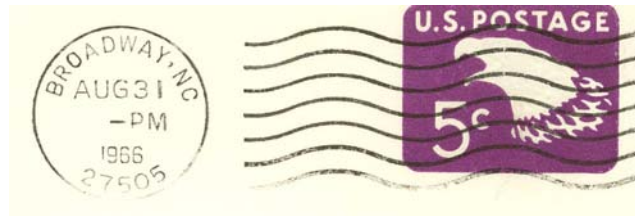
Type 2  
33 mm Black  
1910 Type B 4-Bar  
18 Nov 1915  
2 Jan 1917



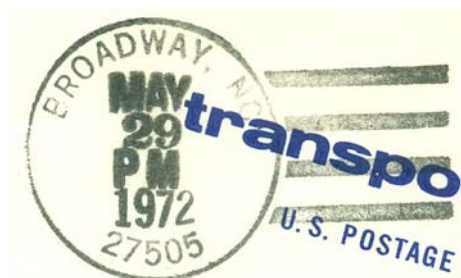
Type 3  
30 mm Black  
Metal Duplex Type H2  
22 Jan 1946  
12 Aug 1957



Type 4  
23 mm Black  
International Machine  
Type AT/S 2721  
11 Jan 1962  
5 Dec 1962



Type 5  
23 mm Black  
International Machine  
Type ATS/z 2721 (27505)  
6 Sep 1966  
14 Jan 1975

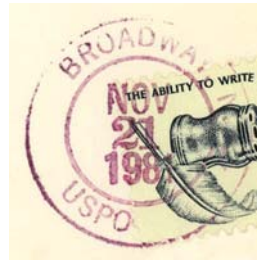


Type 6  
34 mm Black  
1963 Type F/2 4-Bar (27505)  
26 Mar 1971  
29 May 1972

LEE COUNTY

Broadway (Cont.)

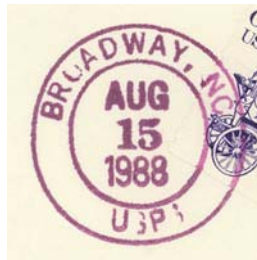
(Lee)



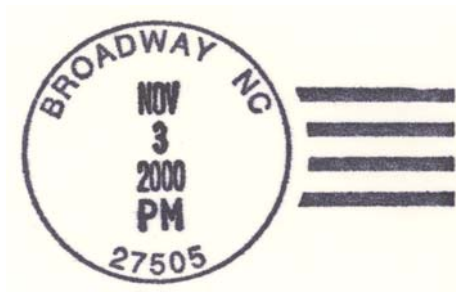
Type 7  
30 mm Magenta  
21 Nov 1981



Type 8  
32 mm Magenta  
1963 Type F/2 4-Bar (27505)  
13 May 1983



Type 9  
28.5 mm Magenta  
15 Aug 1988



Type 10  
35 mm Black  
Self-Inking Postmarker (27505)  
3 Nov 2000



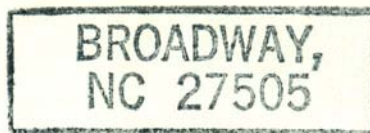
Type 11  
30.5 mm Red  
Self-Inking Postmarker  
(27505-9998)  
15 Oct 2005  
26 Feb 2007

## LEE COUNTY

### Broadway (Cont.)

(Lee)

Third Class Cancelers



Type 1  
49 x 17 mm Black  
26 Mar 1971

### Carbonton (2), from Moore County

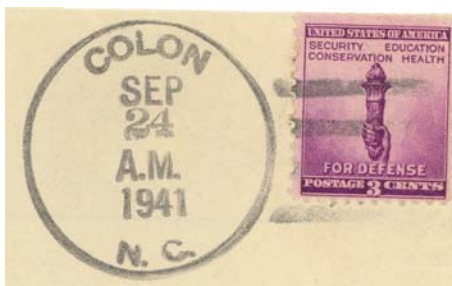
(Lee)

The post office records show that Carbonton (2) moved from Moore County to Lee County on 2 March 1908 and then moved again to Chatham County on 10 March 1908. Since Lee County was not officially formed until 1 April 1908, Carbonton (2) never was in Lees county. This catalog will show it moving from Moore County to Chatham County on 10 March 1908.

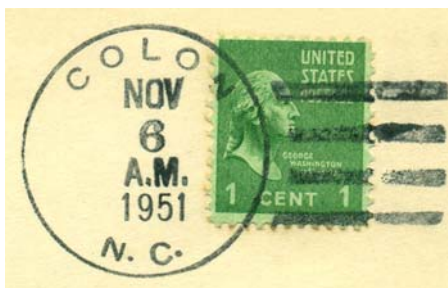
### Colon, from Chatham County

(Lee)

Hume C. Booker	1 Apr 1908
Edward S. Utley	26 Oct 1912
Hume C. Booker	14 Jan 1920
Zora L. Ross, Acting	1 Jan 1945
Zora L. Ross	16 Apr 1946
Pauline L. Harton	7 Nov 1967
Dorothy Sloan Officer -In-Charge	19 Feb 982
Discontinued	13 May 1983
Mail to Sanford	



Type 1  
34 mm Black  
1936 Type F/1 4-Bar  
6 Feb 1940  
24 Sep 1941



Type 2  
33 mm Black  
1936 Type F/1 4-Bar  
19 Apr 1949  
6 Nov 1951



Type 3  
34 mm Black  
1936 Type F/1 4-Bar  
4 Sep 1957

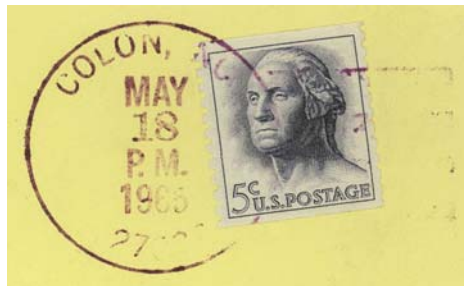
LEE COUNTY

Colon (Cont.)

(Lee)



Type 4  
33.5 mm Black  
1936 Type F/1 4-Bar  
19 Sep 1964



Type 5  
33.5 mm Magenta  
1963 Type F/2 4-Bar (27236)  
18 May 1965



Type 6  
32 mm Black  
1963 Type F/2 4-Bar (27236)  
10 Jul 1970  
27 Jan 1975



Type 7  
30 mm Magenta  
17 Sep 1973



Type 8  
33 mm Black  
1963 Type F/2 4-Bar (27236)  
21 Feb 1978  
13 May 1983

## LEE COUNTY

### Cumnock, from Chatham County

(Lee)

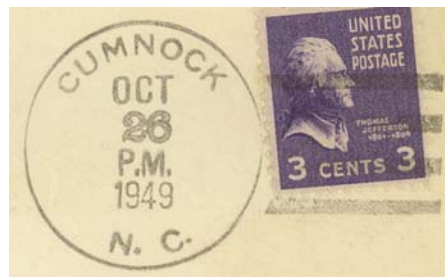
George F. Smith	1 Apr 1908
Mattie L. Smith, Acting	1 Feb 1940
Mattie L. Smith	25 Mar 1940
Lucille B. Spivey, Acting	30 Nov 1965
Discontinued	11 Feb 1966
Rural branch of Sanford	11 Feb 1966



Type 1  
32.5 mm Black  
1910 Type B 4-Bar  
3 Jun 1921



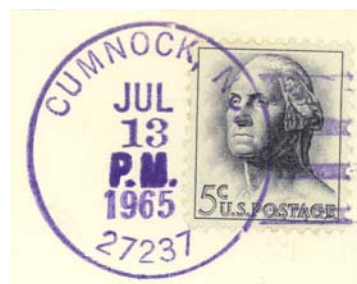
Type 2  
32.5 mm Black  
1925 Type C/1 4-Bar  
20 Apr 1928  
2 Jan 1930



Type 3  
32 mm Black  
1936 Type F/1 4-Bar  
26 Oct 1949  
28 Mar 1951



Type 4  
33 mm Black  
1936 Type F/1 4-Bar  
29 Dec 1956  
8 May 1961



Type 5  
33 mm Purple  
1963 Type F/2 4-Bar (27237)  
13 Jul 1965  
  
33 mm Black  
17 Apr 1972  
31 Jan 1975

## LEE COUNTY

### Jesup, from Moore County

(Lee)

Charles C. Underwood      1 Apr 1908  
 Moved to Moore County    2 May 1911



Type 1  
 30.5 mm Black  
 Doane Type 3-2  
 3 Apr 1908  
 30 Dec 1908

### Jonesboro, from Moore County

(Lee)

Burwell F. Godfrey      1 Apr 1908  
 B. Rufus Avent          2 Feb 1914  
 John W. Kelly            6 Feb 1923  
 Charles M. Rosser      15 Jun 1932  
 Robert A. Watson, Sr.   26 May 1936  
 Discontinued            30 Jun 1948  
 Mail to Sanford



Type 1  
 30.5 mm Black  
 Metal Duplex Type H2  
 6 Jan 1916  
 11 Sep 1925



Type 2  
 30 mm Black  
 Metal Duplex Type H2  
 16 Oct 1928  
 20 Apr 1929



Type 3  
 30.5 mm Black  
 Metal Duplex Type E2  
 15 Nov 1940  
 27 Dec 1941



Type 4  
 21 mm Black  
 Universal Machine  
 Type DT 200  
 30 Jun 1948

## LEE COUNTY

### Lemon Springs, from Moore County

(Lee)

George W. Smith	1 Apr 1908
John K. McLeod	1 Jun 1909
Addie McLeod	4 Feb 1915
Mamie C. Griffen, Acting	1 Feb 1936
Mamie C. Griffen	5 May 1936
John Lloyd Griffen, Acting	30 Apr 1968
Mary Francis Roberts	17 Jan 1969
Mary Francis Warner (marriage)	24 Nov 1971
Diane K. Bryant Officer-In-Charge	30 Sep 1992
Teresa W. Tanner	20 Feb 1993
Diane K. Bryant	28 Sep 1996



Type 1  
32 mm Black  
1908 Type A/2 4-Bar  
29 Nov 1912  
27 Apr 1915



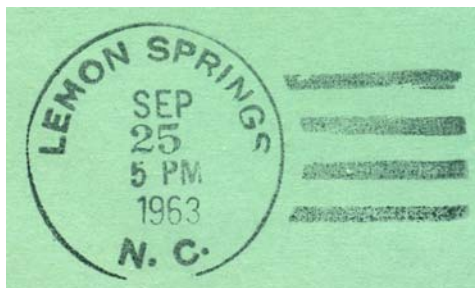
Type 2  
32 mm Black  
1910 Type B 4-Bar  
22 Oct 1915  
19 May 1916



Type 3  
32.5 mm Black  
1925 Type C/1 4-Bar  
8 Oct 1931



Type 4  
33 mm Black  
1936 Type F/1 4-Bar  
13 Oct 1941  
31 Dec 1951



Type 5  
34 mm Black  
1936 Type F/1 4-Bar  
25 Sep 1963  
8 Jun 1964



LEE COUNTY

Lemon Springs (Cont.)

(Lee)



Type 6  
30.5 mm Magenta  
25 Sep 1963



Type 7  
34 mm Black  
1963 Type F/2 4-Bar (28355)  
12 Oct 1966  
21 Sep 1981



Type 8  
30 mm Magenta  
27 Sep 1971



Type 9  
32.5 mm Black  
1963 Type F/2 4-Bar (28355)  
26 Nov 1985  
12 Oct 1990



Type 10  
31.5 mm Black  
Self-Inking Postmarker  
Type 1A (28355)  
2 Oct 1993  
2 Aug 1995

## LEE COUNTY

### Lemon Springs (Cont.)

(Lee)



Type 11  
35 mm Black  
Self-Inking Postmarker (28355)  
8 Nov 1996

### Osgood, from Chatham County

(Lee)

Hattie Deaton	2 Mar 1908
Philip C. Yarborough	15 Jun 1923
Discontinued	31 Jan 1928
Mail to Sanford	

### Sanford, from Moore County

(Lee)

Samuel M. Jones	1 Apr 1908
Samuel V. Scott	2 Jul 1913
John W. Gilliam	21 Jun 1922
Ralph A. Kennedy, Acting	25 Aug 1931
Ralph A. Kennedy	4 Apr 1932
S. Vance Scott, Acting	6 Mar 1935
Annie L. Scott	13 Aug 1935
Edward A. Griffen, Acting	31 Jul 1962
Edward A. Griffen	5 Oct 1962
P. P. PerMar, Jr. Officer-In-Charge	3 Feb 1975
William P. Edwards	26 Apr 1975
William M. Jones, Jr. Officer-In-Charge	29 Jun 1983
Robert C. Maples	29 Oct 1983
Joseph E. Clark Officer-In-Charge	29 Jul 1988
A. Ray Ingram Officer-In-Charge	21 Oct 1988
Joseph E. Clark	11 Feb 1989
Wayne Carmack Officer-In-Charge	2 Sep 1992
Jim L. Carter Officer-In-Charge	10 Dec 1992
Edward G. Odom Jr. Officer-In-Charge	11 Jan 1993
Edward G. Odom Jr.	6 Feb 1993
Sylvia Bullins Officer-In-Charge	29 Jan 2007
Sharon Patrick Officer-In-Charge	28 Sep 2007
Sylvia Bullins Officer-In-Charge	3 Jun 2008
Ronnie C. Warren Jr. Officer-In-Charge	31 Mar 2009
Ronnie C. Warren Jr.	29 Aug 2009
Darlene P. Williams Officer-In-Charge	9 Feb 2011
Darlene P. Williams	16 Jul 2011



Type 1  
30 mm Black  
Metal Duplex Type H2  
3 Aug 1909  
8 Dec 1913



Type 2  
26 mm Black  
Metal Duplex Type E2  
1 Feb 1916  
5 Aug 1922

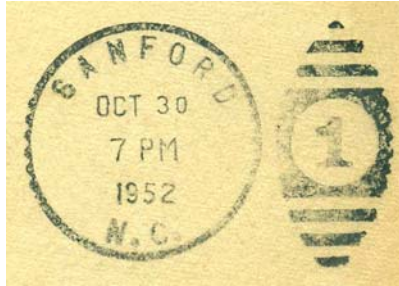


Type 3  
20.5 mm Black  
International Machine  
Type D30  
5 Nov 1926  
27 Sep 1927

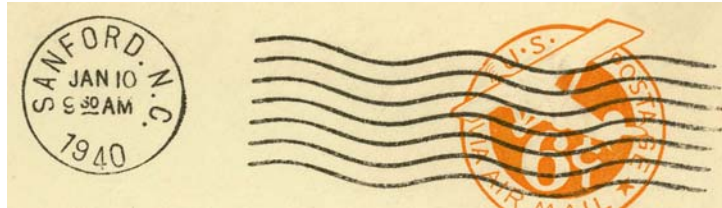
LEE COUNTY

Sanford (Cont.)

(Lee)



Type 4  
31.5 mm Black  
Metal Duplex Type E2  
6 Feb 1937  
17 Apr 1954



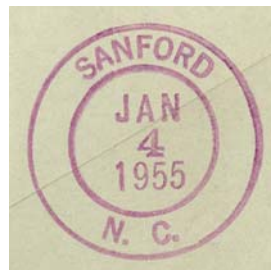
Type 5  
21 mm Black  
International Machine  
Type D30  
10 Jan 1940  
11 Jul 1944



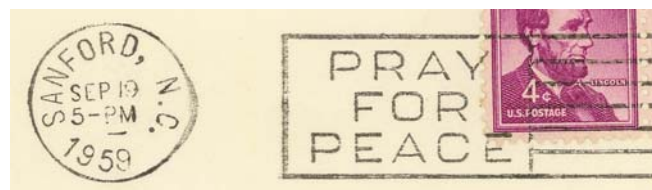
Type 6  
21 mm Black  
International Machine  
Type D30  
13 Jul 1950  
29 Dec 1955



Type 7  
30.5 mm Black  
26 Jul 1951



Type 8  
31 mm Magenta  
4 Jan 1955



Type 9  
21 mm Black  
International Machine  
Type D400 (Pray/For/  
Peace) (wide spacing)  
11 Jul 1959  
13 Jun 1961

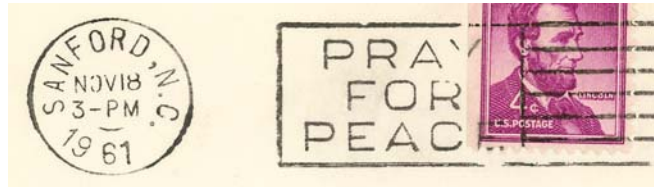
LEE COUNTY

Sanford (Cont.)

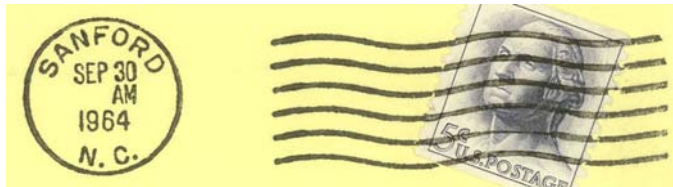
(Lee)



Type 10  
35.5 mm Black  
15 Jan 1960  
13 Oct 1964



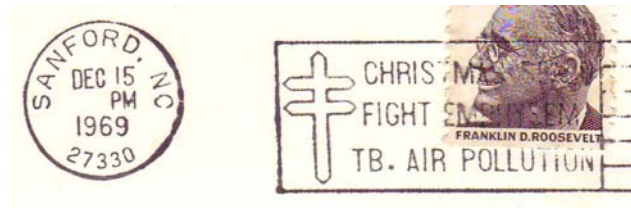
Type 11  
21 mm Black  
Intentional Machine  
Type D400 (Pray/For/Peace) (narrow spacing)  
23 Oct 1961  
27 Nov 1961



Type 12  
21 mm Black  
Universal Machine  
Type DT 300  
10 Jul 1963  
5 Aug 1965



Type 13  
21 mm Black  
Universal Machine  
Type DTS/z 300  
12 May 1966  
6 Apr 1992



Type 14  
21 mm Black  
Universal Machine  
Type DTS/z 400 (Christmas Seals/Fight Emphysema/TB. Air Pollution) (27330)  
15 Dec 1969  
3 Jan 1976

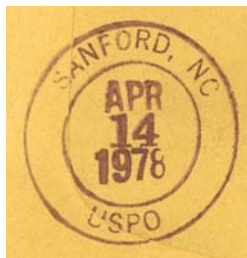


Type 15  
33.5 mm Black  
1963 Type F/2 4-Bar (27330)  
1 Jul 1971

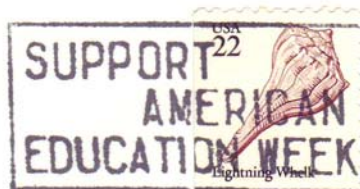
LEE COUNTY

Sanford (Cont.)

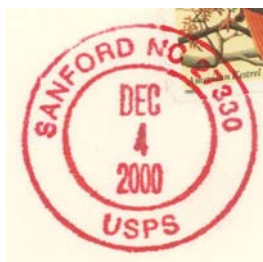
(Lee)



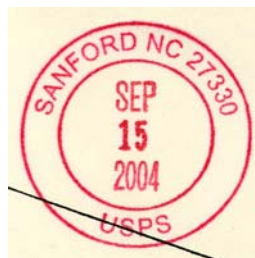
Type 16  
29 mm Magenta  
14 Apr 1978



Type 17  
21 mm Black  
Universal Machine  
Type DTS/z 400 (Support/  
American/Education Week)  
(27330)  
21 Nov 1986



Type 18  
30.5 mm Red  
Self-Inking Postmarker (27330)  
4 Dec 2000



Type 19  
30 mm Red  
Self-Inking Postmarker (27330)  
2 Jun 2004  
21 Mar 2006



Type 20  
30.5 mm Red  
Self-Inking Postmarker  
(27330-9998)  
25 Jun 2007  
19 Dec 2007

LEE COUNTY

Sanford (Cont.)

(Lee)

Station Cancels

Hallmark Station #009736

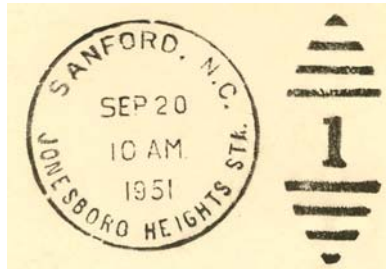


Type 1  
30.5 mm Red  
Self-Inking Postmarker (27330)  
25 Jun 2004

Jonesboro Heights Station

Before 1949

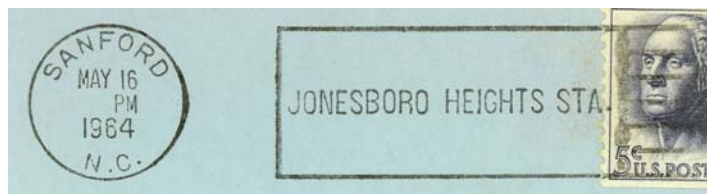
Jan 1989



Type 1  
30.5 mm Black  
Metal Duplex Type ?  
20 Sep 1951  
4 Mar 1957



Type 2  
35.5 mm Black  
14 May 1957  
12 Dec 1960



Type 3  
20.5 mm Black  
Universal Machine  
Type DT 400 (Jonesboro  
Heights Sta.)  
12 Feb 1963  
14 Jul 1965



Type 4  
21 mm Black  
Universal Machine  
Type DTSz 400 (Jonesboro  
Heights Sta.) (27330)  
12 Oct 1966  
12 Mar 1971

LEE COUNTY

Sanford (Cont.)

(Lee)

Station Cancels (Cont.)

Jonesboro Heights Station (Cont.)



Type 5  
29.5 mm Magenta  
26 Jan 1973



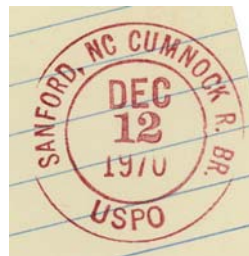
Type 6  
35 mm Black  
1963 Type F/2 4-Bar (27330)  
9 May 1984

Rural Station Cancels

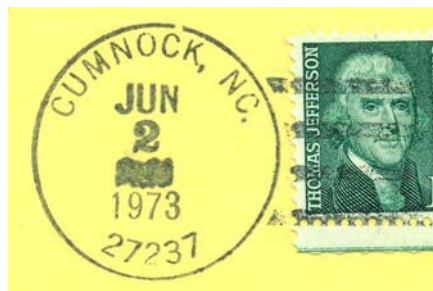
Cumnock Rural Station

11 Feb 1966

30 Sep 1988



Type 1  
28.5 mm Red  
12 Dec 1970  
12 Jul 1985



Type 2  
33.5 mm Black  
1963 Type F/2 4-Bar (27237)  
2 Jun 1973  
12 Jul 1985

## LEE COUNTY

### Sanford (Cont.)

(Lee)

Registered



Type 1  
28.5 mm Purple  
20 Jul 1943



Type 2  
28.5 mm Red  
4 Aug 1947

### Swann Station, from Moore County

(Lee)

Hugh D. Cameron	1 Apr 1908
Litha Cameron	26 Apr 1910
Mary L. Womack	17 Feb 1911
Sallie T. Walker	26 Jul 1924
Discontinued	15 May 1925
Mail to Jonesboro	