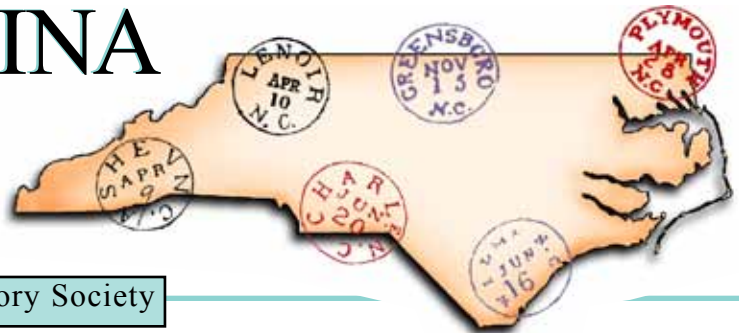


# NORTH CAROLINA POSTAL HISTORIAN

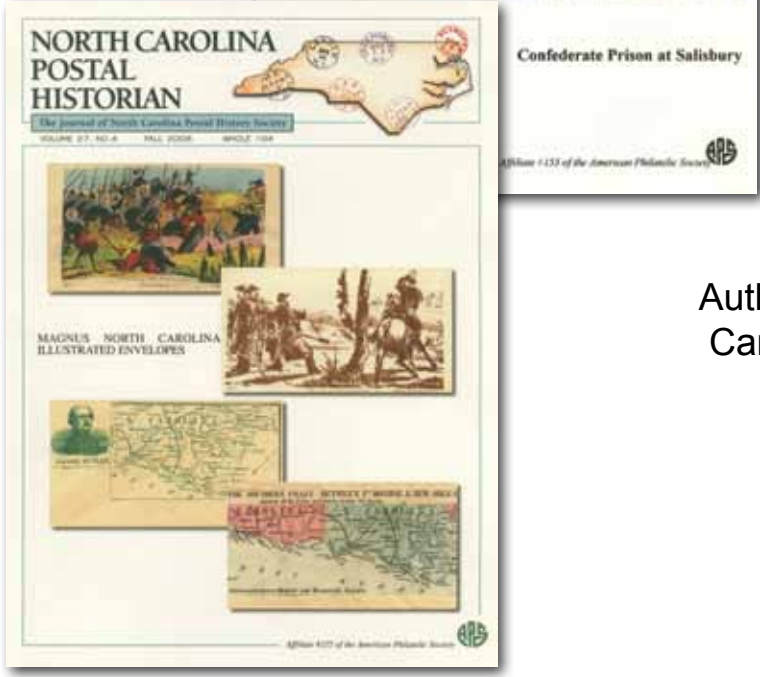
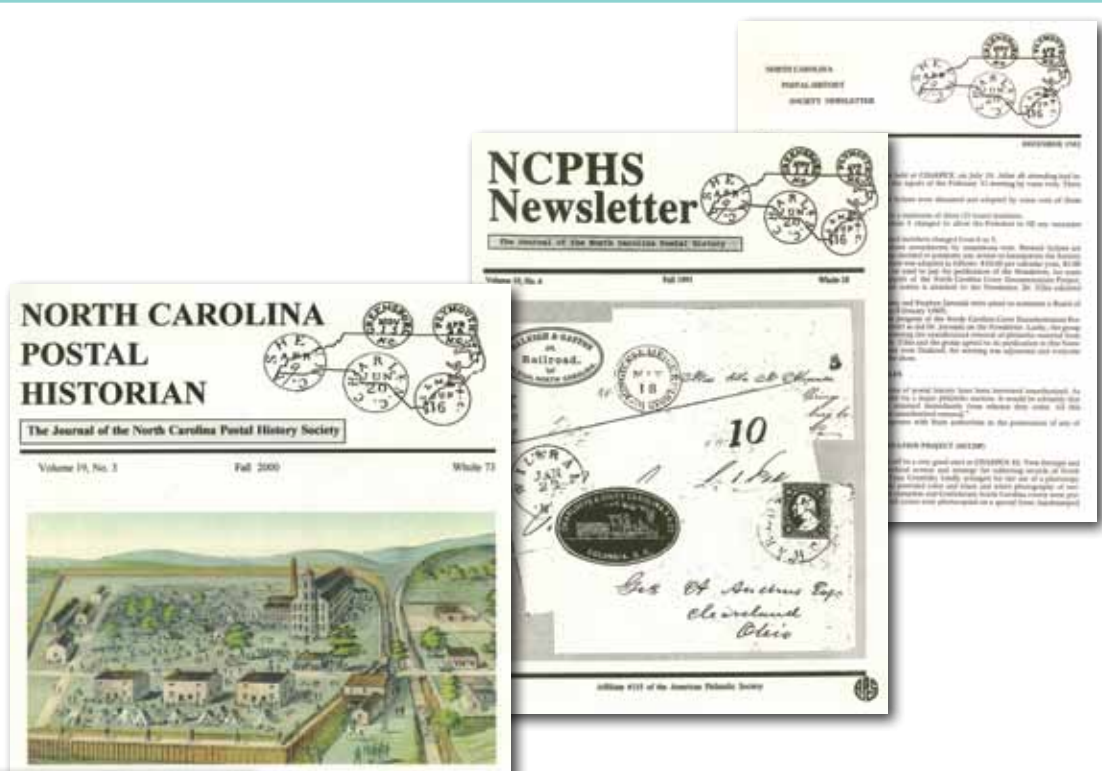


The Journal of North Carolina Postal History Society

VOLUME 29, NO. 1 SUPPLEMENT

WINTER 2009-2010

WHOLE 109 SUPPLEMENT



Special Supplement

Author and Subject Indexes of the North  
Carolina Postal History Society Journal  
By Maurice M. Bursey



## Author Index

By Maurice M. Bursey

*North Carolina Postal History Society Newsletter* (Issues 1 - 15)  
*NCPHS Newsletter* (Issues 16 - 49 , Volume 5, No. 1 - Volume 13, No. 2)  
*North Carolina Postal Historian* (Issues 50 - present, Volume 13, No. 3 - present)

This Author Index is in alphabetical order. It includes exact titles of the works as printed in the journal, with an explanatory note in brackets if the title does not indicate the subject sufficiently. When the article has been reprinted from another source, the original source is identified. Announcements, auction results, and minutes are omitted from the indexes.

Citations consist of volume number and issue number. Until 1986, issues were numbered consecutively, without a volume number. Beginning with 1986, volume numbers were added, the volume for 1986 being designated as Volume 5, and the preceding issues were designated Volumes 1 to 4 according to year. Beginning with Volume 5, there are four numbers per year, except for the following:

Vol. 8, 1984	3 numbers	winter, summer, fall
Vol. 11, 1991-92	5 numbers	winter, spring, summer, fall, winter
Vol. 13, 1994	3 numbers	spring, summer, fall
Vol. 18, 1999	3 numbers	summer, fall, winter
Vol. 19, 2000	3 numbers	spring, summer, fall
Vol. 23, 2004	3 numbers	spring, summer, fall

There were several errors in numbering or dating certain issues when they were printed.

Designation in original issue	Corrected designation used here
No. 8 (Vol. 3, No. 1) Feb. 1984	No. 7 (Vol. 3, No. 1) Feb. 1984*
Vol. 9, No. 2, Spring 1991	Vol. 10, No. 2, Spring 1991*
Vol. 10, No. 2, Summer 1991	Vol. 10, No. 3, Summer 1991*
Vol. 11, No. 3, Fall 1992	Vol. 11, No. 4, Fall 1992*
Vol. 11, No. 4, Winter 1992	Vol. 11, No. 5, Winter 1992*
Vol. 12, No. 4, Summer 1993	Vol. 12, No. 4, Fall 1993*
Vol. 25, No. 2, Summer 2006	Vol. 25, No. 3, Summer 2006*

\*In the indexes, asterisks are used after references to these issues.

Vol. 11, No. 1, Winter 1992, is an accompaniment to *North Carolina Post Offices and Postmasters 1860-1866*, distributed to members. Vol. 13, No. 1, is a letter of 10 April 1994 from Tony L. Crumbley, Editor, to Booksellers, announcing *Postal Markings of North Carolina Railroads*. Vol. 28, No. 1, Winter 2008, has an inserted one-sheet addendum.

### Acee, Marshall

Who's Who in the NCPHS [Dr. Harvey G. Tilles, biographical sketch]	Vol. 26, No. 1, Winter 2006-07: 3
Who's Who in the NCPHS [Stefan T. Jaronski, biographical sketch]	Vol. 26, No. 2, Spring 2007: 3, 14
Who's Who in the NCPHS [Phillip Perkinson, biographical sketch]	Vol. 26, No. 3, Summer 2007: 3, 16
Who's Who in the NCPHS [Jerry R. Roughton, biographical sketch]	Vol. 26, No. 4, Fall 2007: 3
Who's Who in the NCPHS [Tony L. Crumbley, biographical sketch]	Vol. 27, No. 1, Winter 2008: 3, 16

### Allen, John

Meet Founding Member John Allen	Vol. 28, No. 2, Spring 2009: 3
---------------------------------	--------------------------------

### Arthur, Billy

Father of Rural Mail Service [John Steele Henderson, from <i>Our State</i> , March 1997: 14-15]	Vol. 16, No. 2, Summer 1997: 3-4
---	----------------------------------

<b>Baum, Larry</b> Confederate Advertising Census of NC	Vol. 26, No. 2, Spring 2006: 4-11
<b>Bokoski, Dudley</b> 166 Years of the Madison Post Office	Vol. 6, No. 1, Winter 1987: 3-10
<b>Bolden, Don</b> Company Shops, Burlington Had a Third Name [from the <i>Burlington Times-News</i> , Sept. 1, 1993]	Vol. 13, No. 4, Fall 1994: 8-9
<b>Boubelik, Charles, Compiler</b> North Carolina Post Offices Opened during the Doane Period	Vol. 11, No. 2, Spring 1992: 8-10
<b>Brown, Throop C.</b> Snow Camp Doesn't Exist in Cyberspace Who Says Mail Delivery Has Improved over Time? [Siler City to Snow Camp in 1893 and 2004]	Vol. 24, No. 3, Summer 2005: 14 Vol. 24, No. 3, Summer 2005: 15
<b>Bursey, Maurice M.</b> Benjamin Sherwood Hedrick: the Man behind the Covers Covers from Union Soldiers in North Carolina during the Civil War Magnus Illustrated Envelopes Related to North Carolina Mendenhall and Shumaker, Raleigh Cachet Creators of The Early 1930s Patriotic Confederate Envelopes and Covers from North Carolina, W. & J. Bonitz Envelopes from Goldsboro Patriotic Confederate Envelopes and Covers from North Carolina, Part 2. "Whitaker, Wilmington" Patriotic Confederate Envelopes and Covers from North Carolina, Part 3. "Lowenburg & Bro., Beaufort, N.C."	Vol. 27, No. 3, Summer 2008: 4-10 Vol. 27, No. 2, Spring 2008: 4-15 Vol. 27, No. 4, Fall 2008: 3-10 Vol. 28, No. 4, Fall 2009: 8-11 Vol. 28, No. 1, Winter 2009: 3-8, Addendum Vol. 28, No. 2, Spring 2009: 4-8 Vol. 28, No. 2, Spring 2009: 11-14
<b>Bush, Conrad L.</b> Pair of Historical North Carolina Letters, A [Statesville, Apr. 10, Apr. 27, 1865]	Vol. 7, No. 3, Summer 1988: 8-9
<b>Cohn, Ernst M.</b> Confederate Mails in North Carolina [from <i>Postal History Journal</i> , No. 82, June 1989; a review of Ridgway, Richard F., <i>Self-Sufficiency at All Costs: Confederate Post Office Operations in North Carolina, 1864-65</i> ]	Vol. 8, No. 2, Summer 1989: 4
<b>Corbitt, David L.</b> Bids for Carrying the United States Mails [from the <i>North Carolina Historical Review</i> , Vol. 8, No. 2, 1931: 207-212]	Vol. 10, No. 2, Spring 1991: 3-5
<b>Crosby, Joe H.</b> North Carolina Use of United States Postage During the Confederate State Period, A	Vol. 21, No. 4, Winter 2002-03: 9-10
<b>Crumbley, Tony L.</b> 6 ¼ Cent Rate, The 1859 Visit to Charlotte, An 1869 Issue Used from North Carolina, The 1930 Type "E" Four-Bar Cancel, The A. C. Roessler's Carolina Connection Airplane Crash Mail of North Carolina All-North Carolina Airmail Week, October 11-16, 1937 All North Carolina Air Mail Flight of 1937, The Bartonsville, The Classic North Carolina Postal Marking Bath – The Cradle of North Carolina Battle over North Carolina's First Postmistress, The Camp Greene	Vol. 7, No. 2, Spring 1988: 12 Vol. 10, No. 1, Winter 1991: 14-15 Vol. 15, No. 1, Winter 1996: 3-9 Vol. 14, No. 4, Fall 1995: 3-8 Vol. 22, No. 3, Fall 2003: 11-12 Vol. 22, No. 2, Summer 2003: 17 Vol. 22, No. 4, Winter 2003-04: 3-19 Vol. 16, No. 4, Winter 1997-98: 6-10 Vol. 20, No. 2, Summer 2001: 3-5 Vol. 25, No. 1, Winter 2005-06: 3-7 Vol. 28, No. 2, Spring 2009: 14-15 Vol. 12, No. 2, Spring 1993: 9-10

How Bear Poplar Got Its Name	Vol. 16, No. 1, Spring 1997: 5-6
Black Cities of Wake [Oberlin, Method]	Vol. 20, No. 3, Fall 2001: 10-11
Book Review: <i>Dirty Ankle is Far from Bath: How 50 Carolina Cross Roads Got Their Curious Names</i>	Vol. 14, No. 2, Summer 1995: 15
Charlotte Airport Mail Facilities	Vol. 22, No. 3, Fall 2003: 16
China Grove 1823 to Date	Vol. 16, No. 2, Summer 1997: 4-5
Collecting beyond the Covers [Post Cards Illustrating Post Offices]	Vol. 25, No. 1, Winter 2005-06: 14-15
Company Shops, A Brief Passage in Time	Vol. 13, No. 2, Spring 1994: 9-15
Confederate "Green Jacks" Used from North Carolina	Vol. 14, No. 2, Spring 1995: 3-6
Confederate Mails on the North Carolina Railroads	Vol. 16, No. 1, Spring 1997: 8-12
Confederate States Frameline Used in North Carolina, The	Vol. 19, No. 1, Spring 2000: 7
Contract Airmail First Flights	Vol. 22, No. 2, Summer 2003: 3-17
Dated North Carolina Corner Cards Used as Postal Markings	Vol. 17, No. 1, Spring 1998: 3-5
Davidson College	Vol. 21, No. 3, Fall 2002: 3-10
Davis School – A Military Boarding School	Vol. 24, No. 3, Summer 2005: 8-9
Doane Numeral Handstamp Cancels	No. 5 (Vol. 2, No. 2), May 1983: 2-3
Doanes On-line	Vol. 24, No. 2, Spring 2005: 14-15
Dog's Tale, A [Lillington, Four Oaks, to Dixie Hound Kennels, IL]	Vol. 18, No. 3, Winter 2000: 3-4
Doremus Machine Cancels of North Carolina	No. 7 (Vol. 2, No. 4), Nov. 1983: 6-7
Ducks, Turkeys, Aeroplanes Make an Interesting Era of Postal History Collecting	Vol. 11, No. 3, Summer 1992: 7-9
Dunnsville, A Confederate Only Post Office	Vol. 27, No. 3, Summer 2008: 3
Durham, Its Legend in Tobacco	Vol. 21, No. 1, Spring 2002: 7-10
Early Reconstruction Letter from Raleigh, North Carolina, An E Bay Addition, An [Scott 650, Roessler Kitty Hawk Precancel]	Vol. 20, No. 2, Summer 2001: 8-10
Express Mail of 1836-1839	Vol. 22, No. 4, Winter 2003-04: 20
Fighting Ships Called "North Carolina"	Vol. 17, No. 2, Summer 1998: 3-7
Find of Interest, A [fancy cancel, Southport, 1891]	Vol. 14, No. 3, Summer 1995: 3-13
First Federal Issue Revenue of North Carolina, 1798-1801, The	Vol. 6, No. 4, Fall 1987: 13
First Postal Issue of the U.S. Postal Service, The [7-1-71 First Day Covers from North Carolina]	Vol. 12, No. 4, Fall 1993: 8-10
Four U.S.S. Raleighs, The	Vol. 17, No. 3, Fall 1998: 14-15
General Sherman's March Across North Carolina	Vol. 18, No. 2, Fall 1999: 3-8
Gold Hill, North Carolina's Premier Gold City	Vol. 17, No. 3, Fall 1998: 3-5
Greensboro, N.C., or Is It Greensborough, N.C.	Vol. 16, No. 1, Spring 1997: 14-15
Hillsborough Military Academy	Vol. 13, No. 4, Fall 1994: 12-15
History of Air Mail Service in North Carolina	Vol. 23, No. 1, Spring 2004: 39
Ignored North Carolina History, Camp Sutton, German Prisoner-of-War Camp, 1944-46	No. 4 (Vol. 2, No. 1), Feb. 1983: 1-3
Impossible Cover, The [Fake Hobby Shop USS Asheville cover]	Vol. 18, No. 2, Fall 1999: 9-11
Introduction to the Military Encampments of North Carolina, An	Vol. 19, No. 1, Spring 2000: 3
Industrial Revolution in the Postal System, The: The First Decades of the 20th Century – Part 1	Vol. 12, No. 1, Winter 1992-93: 3-14
Industrial Revolution in the Postal System, The [Part 2]	Vol. 21, No. 4, Winter 2002-03: 3-7
Is It, or Isn't It? The Carolina City Provisional	Vol. 22, No. 1, Spring 2003: 11-17
James City: A Black Community in North Carolina	Vol. 5, No. 4, Oct. 1986: 10-14
Jerusalem	Vol. 15, No. 3, Summer 1996: 3-4
Kittrell's Springs	Vol. 15, No. 2, Spring 1996: 3-5
Last Days of the Confederate Prison at Salisbury, The	Vol. 24, No. 4, Fall 2005: 10-14
Lost Wilmington Stamps, The	Vol. 19, No. 3, Fall 2000: 4-6
Madison, North Carolina	Vol. 20, No. 1, Spring 2001: 12-15
Martindale Markings, The	Vol. 25, No. 4, Fall 2006: 4-7
	Vol. 12, No. 4, Fall 1993: 11

Mining Town of Ore Knob, Ashe County, The	Vol. 17, No. 1, Spring 1998: 9
Modern Day Postal History Project, A	Vol. 26, No. 1, Winter 2006-07: 3-5
More on Rural Station Markings [Blue Ridge Rural Station]	Vol. 16, No. 3, Fall 1997: 13
Mourning Covers from North Carolina	Vol. 23, No. 3, Fall 2004: 3-8
Murfreesboro's Wesleyan Female Academy	Vol. 20, No. 3, Summer 2001: 5-8
National Air Mail Week – May 15-21, 1938 (A North Carolinian the National Chairman)	No. 13 (Vol. 4, No. 2), Apr. 1985: 5-6
N.C. Doane Cancel Update	Vol. 15, No. 2, Spring, 1996: 7-12
New Chapel Hill Marking [1827], A	Vol. 5, No. 4, Oct. 1986: 17
New Charlotte Crown Comes to Light, A	Vol. 8, No. 2, Summer 1989: 4
Newly Discovered Confederate Express Company Label, A	Vol. 9, No. 2, Spring 1990: 6-8
North Carolina Airport Dedications	Vol. 22, No. 1, Spring 2003: 3-10
North Carolina at Sea	Vol. 19, No. 2, Summer 2000: 3-15
North Carolina Confederate Fantasies, The	Vol. 13, No. 4, Fall 1994: 4
North Carolina Fortifications, An Encyclopedia of Military Bases in North Carolina, Part One	Vol. 12, No. 1, Winter 1992-93: 3-8
North Carolina Fortifications, An Encyclopedia of Military Bases in North Carolina, Part Two	Vol. 12, No. 2, Spring 1993: 3-8
North Carolina Institution for the Deaf and Dumb and Blind – 1844	Vol. 28, No. 4, Fall 2009: 3-7
“North Carolina, October 15, 1759” – Earliest Known Usage	Vol. 10, No. 2, Spring 1991: 6-7
North Carolina Postal History Bibliography	No. 12 (Vol. 4, No. 1), Jan. 1985: 5-9
North Carolina's Copy of the Declaration of Independence [Bill of Rights]	Vol. 23, No. 2, Summer 2004: 13-15
North Carolina's Only Embossed Postmark? [Glen Anna Female Seminary, Taylorsville]	Vol. 15, No. 3, Summer 1996: 10-11
North Carolina's Tobacco Advertising Covers	Vol. 28, No. 3, Summer 2009: 3-8
O. A. Keehl's Salem Post Office	Vol. 5, No. 2, Apr. 1986: 2-5
Official Government Airmail Flights from North Carolina	Vol. 22, No. 3, Fall 2003: 14-15
On a Warm, Clear September Morn... , The Lenoir Provisional Only Known Copy, The [Franklin, Salisbury, Hillsboro, Chapel Hill, Gaston, Greensboro Confederate Postmaster Provisionals; Shallotte 1858 Free; Charlotte 1897 Tractor Tire Cancel]	Vol. 7, No. 3, Summer 1988: 3-7 Vol. 10, No. 2, Spring 1991: 8-11
Oxford – The City of Two Orphanages	Vol. 26, No. 1, Winter 2006-07: 13-15
Pamlico County	Vol. 23, No. 2, Summer 2004: 3-11
Patterson, N.C. Confederate Fancy Cancels, The	Vol. 11, No. 3, Summer 1992: 5
Philatelic Truck – A First Day of Issue for North Carolina	No. 8 (Vol. 3, No. 1), Feb. 1984: 3-6
Pine Bluff – The Other Carolina Resort Community	Vol. 26, No. 3, Summer 2007: 4-6
Portsmouth Island, NC	Vol. 26, No. 4, Fall 2007: 4-7
Postal History of Charlotte, North Carolina, The	No. 11 (Vol. 3, No. 4), Nov. 1984: 1-10
Postal History of Dare County, A	Vol. 7, No. 1, Winter 1988: 3-12
Postal Route from Cherry Lane to Trap Hill, The	Vol. 17, No. 2, Summer 1998: 8-11
Purple Machine Cancels of North Carolina, The	Vol. 20, No. 1, Spring 2001: 9-11
Quarter Cent Tip for the Postmaster, A [6¼ cent rate]	Vol. 18, No. 1, Summer 1999: 6-10
Railroad One Day, A Cannon the Next, A [Statesville Line; Atlantic, Tennessee, and Ohio Railroad; Davidson College, A.T. & O. postmark]	Vol. 10, No. 4, Fall 1991: 2
Raleigh's 68XU1 Provisional, Another Variety	Vol. 27, No. 3, Summer 2008: 11-13
Recent Discovery, A [fancy CDS, Winston-Salem, 1833]	Vol. 5, No. 2, Apr. 1986: 5
Revisiting the Confederate 2c Green Jackson Issue	Vol. 14, No. 4, Fall 1995: 14
Richard P. Boone North Carolina Cachet Maker	Vol. 19, No. 1, Spring 2000: 8-11
Setting the Record Straight [secession date of North Carolina]	Vol. 15, No. 1, Winter 1996: 12-13

Setting the Record Straight-er [NC, TN independent state periods]	Vol. 15, No. 2, Spring 1996: 12
Size Doesn't Make Rarity – Flat Rock, NC	Vol. 20, No. 2, Summer 2001: 12-15
Smithfield, North Carolina: 200 Years of Postal History	Vol. 27, No. 4, Fall 2008: 11-15
Sneedsboro, Anson County, A Colorful Inland Port City	Vol. 14, No. 1, Winter 1995: 4-5
Springs of North Carolina, The	Vol. 27, No. 1, Winter 2008: 14-19
Stanly County, Nature's Wonders Driving the Local Economy And Creating a Plentiful Postal History	Vol. 24, No. 1, Winter 2004-05: 3-13
Star Shines Bright at the Center of North Carolina, A [Star, N.C.]	Vol. 14, No. 4, Fall 1995: 9-15
Stroupe, Vernon S., Jr. (obituary)	Vol. 25, No. 3*, Summer 2006: 3
There's More to Wake than Raleigh [Apex, Cary, Green Level, Holly Springs, New Hill, Wake Forest College]	Vol. 20, No. 4, Winter 2001-02: 3-5
Three Cent Confederate Rate?, A	Vol. 18, No. 3, Winter 2003: 9-10
Unique Confederate States General Issue Cover, A [Largest Known Multiple of #7, Wilmington],	Vol. 16, No. 4, Winter 1997-98: 3
Vernon S. Stroupe, Jr., 1927-2006 [pages from his collection]	Vol. 25, No. 3, Summer 2006: 3-15
Way Mail of North Carolina	Vol. 21, No. 2, Summer 2002: 6-10
Who's Who in the NCPHS [Phillip Wall, biographical Sketch]	Vol. 27, No. 2, Spring 2008: 3
Wilmington and Raleigh Railroad, The	Vol. 28, No. 1, Winter 2009: 11-15
Wilmington Blockade Cover, A	Vol. 20, No. 2, Summer 2001: 10-12
Wilmington Seven Bar Killer on a Confederate Two-Cent Red Jackson, The	Vol. 11, No. 3, Summer 1992:6
Winston-Salem Postmaster's Postmark	Vol. 23, No. 1, Spring 2004: 15
Wright Pylon Dedication	Vol. 22, No. 4, Winter 2003-04: 21
WWII Ration Stamps Preventing Chaos	Vol. 20, No. 1, Spring 2001: 5-8
<b>Crumbley, Tony L.; McDowell, Harry L.</b> That Other Murfreesboro College: Chowan	Vol. 20, No. 3, Fall 2001: 5-7
<b>Crumbley, Tony L.; Stroupe, Vernon S.</b> Postal History of Concord, A	Vol. 9, No. 4, Fall 1990: 3-8
<b>Crumbley, Tony L.; Wetmore, Ruth Y.</b> Robeson County, Resting Place of Virginia Dare?	Vol. 21, No. 1, Spring 2002: 13-14
<b>Doares, Robert F., Jr.</b> North Carolina Civil War Post Office to Issue Anniversary Cover [Raft Swamp postal history]	Vol. 15, No. 2, Spring 1996: 13-14
Raft Swamp: North Carolina's Oldest Postal Building?	Vol. 8, No. 2, Summer 1989: 8-11
<b>Editor</b> Buyer Beware! [fake Greensboro Paid 10 patriotic]	Vol. 13, No. 4, Fall 1994: 11
Caldwell, Jean Bellamy (obituary)	Vol. 24, No. 4, Fall 2005: 15
Collector's Peek into the Past, A [1895 Prices in Advertisement from Warren Plains]	Vol. 21, No. 4, Winter 2002-03: 15
Colonial Rarities Surface	Vol. 20, No. 3, Fall 2001: 3-4
Correct Size for the Raleigh Type 3 [CDS]	Vol. 20, No. 3, Fall 2001: 3
Cumulative Index to the NCPHS Newsletter and Postal Historian, 1982 – 1997	Vol. 15, No. 4, Winter 1997: 12-15
Cumulative Index to the NCPHS Newsletter, 1982-1994 and Postal Historian, 1994-2001	Vol. 20, No. 4, Winter 2001-02: 14-19
Dunn's Rock, N.C., Western N.C. During the Civil War	Vol. 7, No. 3, Summer 1988: 14
Early Reconstruction Letter from Raleigh, An	Vol. 19, No. 3, Fall 2000: 14-15
From the Archives [Murfreesboro cover, Oct 28, 1808]	Vol. 13, No. 4, Fall 1994: 16
From the Files [Quantities of Scott 1 and 2 Shipped, 1848-51]	No. 2, Jul. 1982: 2
From the N.C. Archives [Mount Tirzah, 1796]	Vol. 10, No. 3, Summer 1991: 15

Grimshawes [from unknown newspaper, July 9, 1944]	No. 15 (Vol. 4, No. 4), Oct. 1985: 14
Harris, James P. (obituary)	Vol. 15, No. 2, Spring 1996: 2
Harter, William (notice of death)	Vol. 9, No. 4, Fall 1990: 2
Holt, W. Clary (obituary)	Vol. 22, No. 4, Winter 2003-04: 20
Horner & Horner School, Oxford, N.C.	Vol. 12, No. 3, Summer 1993: 15
Hugh Finlay Journal, The [from Brooklyn Mercantile Library Association, 1867, reprinted by U. S. Philatelic Classics Society, 1975.]	Vol. 9, No. 4, Fall 1990: 9-15
Hunt, Robert H. (obituary)	Vol. 21, No. 3, Fall 2002: 12
Humphrey-Williams-Smith House Wins National Preservation Award [Raft Swamp; from <i>Historic Preservation News</i> , 1991]	Vol. 10, No. 2, Spring 1991: 12
Is This Cancellation in Your Collection? [Hillsborough]	Vol. 14, No. 1, Winter 1995: 16
Letter from the Past [Petersburg & Roanoke Rail Road, 1845]	Vol. 7, No. 4, Fall 1988: 14
Letter from the Past, An 1835 Letter from Roanoke Island [Elizabeth City CDS]	Vol. 7, No. 1, Winter 1988: 20
Letter from the Past, Education in Eastern North Carolina, 1829 [Pantego]	Vol. 6, No. 1, Winter 1987: 17-18
Letter from the Past, Hard Times in Wilmington [1865]	Vol. 6, No. 3, Summer 1987: 16
Letter from the Past, A Journey during the War of 1812	Vol. 6, No. 4, Fall 1987: 14
Letter from the Past, Low Morale at War's End	Vol. 8, No. 1, Winter 1989: 20
Letter from the Past, Moravian Salem in 1786	Vol. 6, No. 2, Spring 1987: 24
Letter from the Past, The New Garden Quaker Community	Vol. 7, No. 2, Spring 1988: 16
Marking Up-Dates	Vol. 20, No. 3, Fall 2001: 2
McDowell, Harry L. (obituary)	Vol. 22, No. 4, Winter 2003-04: 20
Meet Founding Member Rich Weiner	Vol. 28, No. 1, Winter 2009: 9
Newbern, North Carolina Roulettes [1851 issue]	Vol. 15, No. 1, Winter 1996: 10-11
North Carolina Postal History Exhibit Opens	Vol. 18, No. 1, Summer 1999: 3-4
Notice in the North Carolina Gazette – 1 Aug. 1797 [Newbern Post Office advertisement]	Vol. 20, No. 3, Fall 2001: 9
Painting in North Carolina Museum of Art to Be Used on 1993 Christmas Stamp	Vol. 11, No. 5, Winter 1992: 15
Postal Notes of Company's Shops/Burlington	Vol. 19, No. 1, Spring 2000: 4-6
Postmaster Finder – Postal History Database Available To the Public	Vol. 20, No. 4, Winter 2001-02: 8
Rural Delivery Route No. 1, Pine Hall, Stokes Co., N.C.	Vol. 5, No. 1, Jan. 1986: 12
Salvo, State's Smallest Post Office, to Reopen?	Vol. 12, No. 4, Fall 1993: 13
Sapperstein, Perry M. (obituary)	Vol. 16, No. 1, Spring 1997: 2
Scott, George (notice of death)	Vol. 7, No. 1, Winter 1988: 19
Snow Camp, Not Snow Hill	Vol. 24, No. 4, Fall 2005: 14
Those Davison College Illustrated Covers	Vol. 23, No. 3, Fall 2004: 15
Wicker, Milton G., obituary	Vol. 8, No. 1, Winter 1989: 2
<b>Ertzberger, Darrell R.</b>	
County and Postmaster Cancels of North Carolina	No. 15 (Vol. 4, No. 4), Oct. 1985: 3-13
The First County-Wide RFD System in North Carolina: Mecklenburg County	Vol. 14, No. 1, Winter 1995: 8-11
Forsyth County Covers 1841-1986	Vol. 5, No. 2, Apr. 1986: 9-20
Free City Delivery in North Carolina	No. 13 (Vol. 4, No. 2), Apr. 1985: 3-6
Postal History of Davie County, A	Vol. 5, No. 3, Apr. 1986: 3-13
Silver, Stanly County, North Carolina	No. 10 (Vol. 3, No. 3), Aug. 1984: 1-2
<b>Estus, Glenn</b>	
U.S. Postal Service, Official Sponsor of 1992 Olympic Games	Vol. 16, No. 4, Winter 1997-98: 12-13
<b>Fricke, Charles A.</b>	
Multifaceted Kawana, Mitchell County, Postmark, A	Vol. 11, No. 2, Spring 1992: 14-15

---

<b>Gallico, Paul</b>	Thinking Aloud [Attempt to Report Wright Brothers' First Flight, from the Norfolk Landmark, ca. 1948]	Vol. 22, No. 3, Fall 2003: 13
<b>Goerch, Carl</b>	Many Tar Heel Postoffices Have Been Given Odd Names [from Washington Daily News, ca. 1921-1931]	Vol. 9, No. 3, Summer 1990: 10-12
<b>Green, Brian</b>	Two New North Carolina Postal Markings Come to Light [Abbotts Creek, Paid 3; Jamestown, Paid 1]	Vol. 9, No. 2, Spring 1990: 3
<b>Green, Maria and Brian</b>	White Road, N.C. Confederate Cover, A	Vol. 10, No. 2, Spring 1991: 13
<b>Griffin, Flora G.</b>	Tales of the Mail Route Days of Luther S. Griffin [Unionville Rural Route 2]	Vol. 7, No. 1, Winter 1988: 13-14
<b>Hall, Charles F., Jr.</b>	Postal History of the Fayetteville Arsenal and Armory, The	Vol. 28, No. 3, Summer 2009: 9-14
<b>Harrison, Galen</b>	Salisbury Prison - December 1861 - April 1865	Vol. 19, No. 3, Fall 2000: 7-13
<b>Harter, William &amp; Marian</b>	History of the Spencer Post Office, A	Vol. 6, No. 3, Summer 1987: 13-15
<b>Hecht, Arthur</b>	Postal History of North Carolina, 1789-1795, Part I [from the <i>North Carolina Historical Review</i> , Vol. 35, No. 2, 1958: 125-152]	Vol. 8, No. 1, Winter 1989: 12-19
	Postal History of North Carolina, 1789-1795, Part II [ibid.]	Vol. 8, No. 3, Fall 1989, 4-12
<b>Hensley, Tim</b>	All Aboard for the Virginia Creeper [Norfolk & Western in Ashe County, from Steam, Steel & Stars: America's Last Steam Railroad]	Vol. 15, No. 3, Summer 1996: 5-7
<b>Herring, Harriett</b>	Cacheted Envelope Issued in Swansboro	Vol. 6, No. 2, Spring 1987: 23
<b>Holt, W. Clary</b>	1863 Refugee Banking in Company Shops	Vol. 20, No. 1, Spring 2001: 3-4
	College Covers, University of North Carolina	Vol. 17, No. 4, Winter 1999: 3-11
	Money Problem, A [Chapel Hill provisional Paid 5]	Vol. 21, No. 1, Spring 2002: 15
	Refusing to Shake Hands – Near the Courthouse in Graham [Christian Conference Correspondence]	Vol. 20, No. 3, Fall 2001: 7-9
	The Story of a Turned Cover, The [Raleigh, Saxapahaw to Clover Orchard]	Vol. 21, No. 4, Winter 2002-03: 7-8
<b>Homesly, Greg</b>	Confederate Cover Addressed to Swann's Station	Vol. 10, No. 4, Fall 1992: 14-15
	Siler City Pseudo Machine Postmark, A North Carolina Rarity, The	Vol. 12, No. 4, Fall 1993: 7
	Wilmington & Fayetteville River Route Marking	Vol. 10, No. 4, Fall 1991: 19
<b>Hulme, Wilson</b>	New Bern Roulettes, A Request for Information	Vol. 15, No. 1, Winter 1996: 10
<b>Jaronski, Stefan T.</b>	Contemporary Accounts of the Union Occupation Post Office at New Berne, North Carolina	No. 12 (Vol. 4, No. 1), Jan. 1985: 1-2
	Mail from Roanoke Island in the Civil War	No. 13 (Vol. 4, No. 2), Apr. 1985: 7-9
	Postal Service for the Confederate Defenders of Roanoke Island	Vol. 7, No. 3, Summer 1988: 10-12
	Postal Services during Initial Occupation of New Berne, North Carolina	No. 12 (Vol. 4, No. 1), Jan. 1985: 3-4

---



- Johnston, Hugh Buckner, Ed.**  
Journal of Ebenezer Hazard in North Carolina, 1777 and 1778, The [from the *North Carolina Historical Review*, Vol. 36, No. 3, 1959: 358-381] Vol. 10, No. 1, Winter 1991: 4-13
- Justesen, Ben**  
African American Postmasters in North Carolina, 1874-1909 Vol. 25, No. 2, Spring 2006: 3-11
- Lasley, W. T.**  
First Rural Delivery in North Carolina Began at China Grove, The No. 13 (Vol. 4, No. 2), Apr. 1985, 1-3
- Leland, Elizabeth**  
Petite Post Office Makes 'Em Proud [Salvo, from the *Charlotte Observer*, July 25, 1988] Vol. 7, No. 4, Fall 1988: 12-13
- Lohr, Lawrence L.**  
Adding a New Frame-Line to the List [Concord – Mt. Pleasant] Vol. 25, No. 1, Winter 2005-06: 8  
Post-Civil War Correspondence of the Lenoir Family of Fort Defiance, North Carolina, The Vol. 11, No. 2, Spring 1992: 3-7
- Lupton, David W.**  
Hog Island and Lupton, North Carolina Vol. 15, No. 4, Winter 1997: 9-10
- Mandel, Frank**  
Identification of Postmark Types Produced from Handstamps Made by Edmond S. Zevely, 1850-1861 [from the *American Philatelic Congress Book*, 1987] Vo. 10, No. 3, Summer 1991: 3-9
- Mattox, Doug**  
Site Survey of the Wendell Post Office Submitted Vol. 11, No. 5, Winter 1992: 13
- Mayes, Helen V.; Troutman, Scott**  
Oxford, Granville County, Its Nineteenth Century Postal History Vol. 12, No. 3, Summer 1993: 3-14
- McDowell, Harry L.**  
Scotland Neck Postmarks, 1797-1900 Vol. 7, No. 4, Fall 1988: 3-8  
Mount Tirzah, An 18th Century Post Office Vol. 18, No. 1, Summer 1991: 11-13
- McRee, Timothy M.**  
North Carolina Hunting and Fishing Stamp Update, 1988-1991 Vol. 11, No. 5, Winter 1992: 8-12  
North Carolina Hunting and Fishing Stamps Vol. 6, No. 4, Fall 1987: 6-9  
North Carolina Hunting and Fishing Stamps, 1986-87 and 1987-88 Vol. 9, No. 2, Spring 1990: 8-11
- Monroe, James L. D.**  
Confederate States Blockade Mourning Cover with Frameline Vol. 21, No. 4, Winter 2002-03: 11  
Unique Independent Statehood Cover, A Vol. 21, No. 4, Winter 2002-03: 12
- Nelson, Frank J.**  
Camp Hoffman: Where Did It Go? Vol. 18, No. 2, Fall 1999: 12-13  
Fallstown, Iredell County Vol. 18, No. 2, Fall 1999: 15
- O'Sullivan, Thomas J.**  
North Carolina's Pioneer Air Mail: Wilmington, 1912 Vol. 5, No. 4, Oct. 1986: 3-5  
[from *The Pioneer Airplane Mails of the United States*, American Air Mail Society, 1985.]
- Otterbourgh, Ken**  
Coal-Mining Disaster of '25 was N.C.'s Worst [from the *Winston-Salem Journal*] Vol. 13, No. 2, Spring 1994: 3-8
- Parris, John**  
Marion Jones Unearths Dillsboro Postal History [from the *Asheville Citizen-Times*, Aug. 30, 1987] Vol. 6, No. 4, Fall 1987: 11-12
- Perkinson, Phil**  
Pearl Diving in the Warren County Landfill [Axtell cover and Enclosure Matched] Vol. 18, No. 3, Winter 2000: 11  
Postal History of Vance County Vol. 20, No. 4, Winter 2001-02: 9-11

- Postal Operations in Vance County  
**Perkinson, Phil; Crumbley, Tony L.**  
 Raleigh Bayonet Factory, The  
**Postlewait, Dilmond D.**  
 Precancels in North Carolina  
**Richardson, Thomas S.**  
 1847 Issue in North Carolina, The  
 1869 Update, An  
 Search for Leo, The  
**Richardson, Thomas S.; Schoolmeester, Kenneth**  
 Quantities of the 1c, 3c, and 12c Issues Delivered to  
 North Carolina in July 1851  
**Roughton, Jerry R.**  
 Duncan MacRae, Postmaster of Fayetteville  
 Medical Remedies for Man's Ailments  
 Natural Wells Post Office, 1892-1903  
**Rupert, Art; McCord, Davie R.**  
 North Carolina Rural Stations  
 North Carolina Rural Station Update  
**Sanford, Robert L.**  
 Old Covers Made Good Note Pads  
**Scheuer, Henry B.**  
 Kennedy First Day Covers  
**Schoolmeester, Ken**  
 James C. Johnston, Esq.  
 North Carolina Fancy Cancels  
 North Carolina Octagonal Postmarks  
 Old Post Offices Never Die... [Jarvisburg, Grandy, Hertford]  
**Scott, Bob**  
 Nation's Smallest Post Office Will Be No More [from  
*The Asheville Citizen*, March 7, 1986]  
**Sharpe, Bill**  
 From the *State Magazine*, Sept 15, 1968 [from From Murphy  
 to Manteo, Sell Out, p. 19; Mashoes]  
**Sherrill, Betty**  
 Old Post Office Not Forgotten, Puella Post Office One of  
 40 Sites for Rural Mail Delivery [from the *Asheville  
 Citizen-Times*, 24 Jan. 1990]  
**Sparks, Howard J.**  
 Postal History on a Shoestring [Greensboro, mid-1980s]  
**Stanton, Thomas E.**  
 Reopening North Carolina Post Offices, 1865-70  
**Stets, Robert J.**  
 Confederate Post Office Department Letters  
 More about Oxford, Granville County, N.C.  
 Postal History of North Carolina, 1789-1795, An Epilogue  
 Post Cards Tell the Story  
 Those "Unofficial" Self-Inking Postmarkers  
 Why Were There Two Postmasters at Greensboro in 1811?  
**Stout, Garland**  
 More on Spencer Postal History
- No. 7 (Vol. 2, No. 4) Nov. 1983: 2-5  
 Vol. 21, No. 1, Spring 2002: 11-12  
 Vol. 8, No. 2, Summer 1989: 5-7  
 Vol. 16, No. 3, Fall 1997: 3-10  
 Vol. 26, No. 4, Fall 2007: 12-13  
 Vol. 8, No. 2, Summer 1989: 3  
 Vol. 9, No. 3, Summer 1990: 3-5  
 Vol. 25, No. 1, Winter 2005-06: 10-11  
 Vol. 20, No. 4, Winter 2001-02: 6-8  
 Vol. 16, No. 2, Summer 1997: 5  
 Vol. 16, No. 2, Summer 1997: 6-12  
 Vol. 16, No. 3, Fall 1997: 14-15  
 Vol. 12, No. 2, Spring 1993: 11  
 Vol. 11, No. 3, Summer 1992: 14-15  
 Vol. 6, No. 1, Winter 1987: 10-11  
 Vol. 8, No. 1, Winter 1989: 3-9  
 Vol. 6, No. 4, Fall 1987: 3-5  
 Vol. 5, No. 4, Oct. 1986: 14-16  
 Vol. 5, No. 3, Jul. 1986: 14  
 Vol. 10, No. 2, Spring 1991: 7]  
 Vol. 14, No. 1, Winter 1995: 14-15  
 Vol. 6, No. 2, Spring 1987: 21-22  
 Vol. 6, No. 3, Summer 1987: 3-11  
 Vol. 16, No. 1, Spring 1997: 7  
 Vol. 12, No. 4, Fall 1993: 3-4  
 Vol. 8, No. 3, Fall 1989: 12-14  
 Vol. 15, No. 4, Winter 1997: 3-4  
 Vol. 7, No. 2, Spring 1988: 3-6  
 Vol. 14, No. 1, Winter 1995: 6  
 Vol. 6, No. 4, Fall 1987: 12

---

**Stroupe, Vernon S.**

Book Review: *North Carolina Petitions for Presidential Pardons, 1865-67*: by Russell S. Koonts  
Buyer Beware [Fake Greensboro Confederate Cover]  
Covers are Seldom What They seem [Halifax, Oaks]  
Edenton Straight-Line Post Mark Better Defined  
Errors in "Postal History - The Basics"  
First Federally Appointed Woman Postmaster, The  
First North Carolina Post Office Site Survey Submitted  
From the Archives, A Manuscript Circular Date Stamp [Murphy]  
From the Archives (Murfreesboro)  
Gold Nuggets from the N.C. State Archives  
Marking Update [Hillsborough]  
More DPO's in the Making [Candidates near Charlotte]  
New Asheville Marking, Type 3.5, A  
New Berne, Mr. Typographer, Not Newbern  
New Discovery, A [Hotel, N.C., fancy cancel, 1857]  
New Find, A [Fayetteville paid in oval sunburst, 1822, 1824]  
New Raleigh Post Mark Identified – Type 18.5  
Philatelic Treasures from the State Archives  
Postal History - The Basics  
Postmarks or Cinderellas?  
The Raft Swamp Challenge, The  
Slow Mail on the Raleigh & Gaston Railroad  
Time Warp at Raft Swamp, A  
Twenty-Fifth Anniversary of the Wright Brothers' Flight, The  
Two Different Salem Postmarks [1852-60 and 1861-1865]  
Visiting Columbus [OH], A Really Good Stamp Show

**Stroupe, Vernon S.; Crumbley, Tony L.**

Postal History of Asheville

**Tilles, Harvey**

Highway Post Offices of North Carolina, The  
Manuscript Postal Markings from North Carolina  
North Carolina Statehood Bicentennial Cancels  
Post Roads into North Carolina (Excerpts from the 1820  
Postal Manual)

**Troutman, Scott**

Abshers, Dockery and Joynes, Wilkes County, N.C.  
Additional Pamlico County Markings  
Atlantic, Tennessee & Ohio Cover  
Belvidere, Perquimans County  
Confederate Letter after the Battle of Roanoke Island  
Durants of Durant's Neck – Perquimans County, The  
Duck  
Early Invitation from Sandy Mush, An  
Englehard, Hyde County  
Envelope from Cobb's, An  
Fast Freight from Baltimore [through Wilmington by Steamer]  
Fort Johnston, Brunswick County  
Fourth Railroad over the Blue Ridge, The  
Galax for Sale in Low Gap, NC  
Goldsboro & Morehead City Agent Marking

Vol. 15, No. 1, Winter 1995: 2  
Vol. 13, No. 4, Fall 1994: 11  
Vol. 19, No. 1, Spring 2000: 12-13  
Vol. 11, No. 5, Winter 1992-93: 14  
Vol. 14, No. 3, Summer 1995: 14  
Vol. 25, No. 1, Winter 2005-06: 13  
Vol. 9, No. 3, Summer 1990: 7-9  
Vol. 12, No. 4, Fall 1993: 12  
Vol. 13, No. 3, Fall 1994: 16  
Vol. 7, No. 4, Fall 1988: 10-12  
Vol. 14, No. 2, Spring 1995: 16  
Vol. 23, No. 1, Spring 2004: 10  
Vol. 24, No. 4, Fall 2005: 9  
Vol. 13, No. 4, Fall 1994: 5  
Vol. 7, No. 2, Spring 1988: 10  
No. 13 (Vol. 4, No. 2), Apr. 1985: 9-10  
Vol. 25, No. 1, Winter 2005-06: 12-13  
Vol. 6, No. 1, Winter 1987: 12-14  
Vol. 14, No. 2, Spring 1995: 8-14  
Vol. 15, No. 3, Summer 1996: 10-11  
Vol. 8, No. 2, Summer 1989: 12  
Vol. 6, No. 4, Fall 1987: 10  
Vol. 8, No. 2, Summer 1989: 11  
Vol. 22, No. 3, Fall 2003: 3-4  
Vol. 7, No. 1, Winter 1988: 19  
Vol. 22, No. 3, Fall 2003: 2  
Vol. 24, No. 4, Fall 2005: 3-8  
No. 8 (Vol. 3, No. 1), Feb. 1984: 1-3  
Vol. 5, No. 3, Jul. 1986: 17  
Vol. 26, No. 3, Summer 2007: 8-12  
No. 10 (Vol. 3, No. 3), Aug. 1984: 5-6  
Vol. 11, No. 3, Summer 1992: 11-13  
Vol. 23, No. 2, Summer 2004: 10-11  
Vol. 26, No. 3, Summer 2007: 13  
Vol. 16, No. 4, Winter 1997-98: 15  
Vol. 25, No. 4, Fall 2006: 10-13  
Vol. 26, No. 3, Summer 2007: 7  
Vol. 21, No. 4, Winter 2002-03: 13-14  
Vol. 20, No. 3, Fall 2001: 12  
Vol. 13, No. 4, Fall 1994: 6-7  
Vol. 23, No. 3, Fall 2004: 13-14  
Vol. 25, No. 1, Winter 2005-06: 9  
Vol. 24, No. 3, Summer 2005: 11-12  
Vol. 15, No. 2, Spring 1996: 5-7  
Vol. 26, No. 4, Fall 2007: 11  
Vol. 26, No. 4, Fall 2007: 14-15

History (Postal and Otherwise) of the Towns (Houck, Mortimer, Akako, and Edgemont) along Wilson Creek Gorge, Caldwell County, N.C., A	Vol. 11, No. 5, Winter 1992: 3-7
Individual Railroad Clerk Markings Jerusalem, N.C.	Vol. 20, No. 3, Fall 2001: 13-14
Kitty Hawk, Derivation of the Name	Vol. 7, No. 2, Spring 1988: 11-12
Lake Landing, Hyde County	Vol. 22, No. 3, Fall 2003: 4
Lenoir and Lancaster Railroad Post Office	Vol. 14, No. 1, Winter 1995:12-13
Letter from the Past, A Union Soldier at Fort Fisher, N.C., A	Vol. 24, No. 3, Fall 2005: 10-11
Letter from the Tweetsie, A	Vol. 10, No. 3, Summer 1991: 10-11
Letters from the 6th New Hampshire	Vol. 15, No. 2, Spring 1996: 15
Letters from the Phebe	Vol. 7, No. 1, Winter 1988: 15-18
Look at the Lightship Service in North Carolina, A	Vol. 17, No. 3, Fall 1998: 6-9
Mamie, Currituck County	Vol. 10, No. 1, Winter 1991: 3-4
Margarettsville, N. C. Cover, A	Vol. 19, No. 1, Spring 2000: 15
Mining Town of Ore Knob, Ashe County, The	Vol. 10, No. 3, Summer 1991: 10
New Lebanon and South Mills – Camden County	Vol. 18, No. 2, Fall 1999: 14
New Railway Post Office Cancel Found [Wilm. & Ruth. R.P.O.]	Vol. 23, No. 1, Spring 2004: 11-13
North Carolina Sales Tax Coupons	Vol. 14, No. 4, Fall 1995: 15
North Carolina Sprayed-on Postmarks	Vol. 25, No. 2, Spring 2006: 12-13
North Carolina's First Rural Mail Carrier	Vol. 12, No. 2, Spring 1993: 12-13
North Carolina's Smallest Post Office a Victim of Arson [Salvo]	Vol. 16, No. 2, Summer 1997: 4
Notes on the Last "Letter from the Past" [Roanoke Island, 1835]	Vol. 12, No. 2, Spring 1993: 15
Old Mica Mine Cover [Soda Creek, Gap Creek]	Vol. 7, No. 2, Spring 1988: 15
Pantego to Tuscarora – Two Remarkable R.P.O. Covers	Vol. 16, No. 4, Winter 1997-98: 14
Personal Contents of the Allen Letters, A glimpse into Life at Tally Ho, The	Vol. 18, No. 3, Winter 2000: 7
Plymouth, N.C. Find	Vol. 11, No. 2, Spring 1992: 13
Portsmouth Cover, A	Vol. 25, No. 4, Fall 2006: 14
Postmaster Alters History at Kill Devil Hills, A	Vol. 25, No. 1, Winter 2005-06: 8-9
Pre-Civil War Railroads of North Carolina, Their Histories and Postal Markings	Vol. 22, No. 3, Fall 2003: 5-10
Relook at St. Lewis, N.C., A	Vol. 10, No. 4, Fall 1991: 3-18
Rise and Fall of Camp Davis, The Shipyard [Camden County]	Vol. 25, No. 4, Fall 2006: 3
Sinful Doings in Stokes County [1862]	Vol. 11, No. 5, Winter 1992: 14-15
Sneads Ferry, Onslow County	Vol. 25, No. 1, Winter 2005-06: 12
Sodom, Madison County	Vol. 7, No. 3, Summer 1988: 13
Some Early Mt. Gilead History	Vol. 28, No. 4, Fall 2009: 12-13
Stampless Cover from Hoylesville, N.C., A	Vol. 15, No. 3, Summer 1996: 9
Straits, Gloucester and Marshallberg	Vol. 15, No. 4, Winter 1997: 11
Swan Quarter, Hyde County	Vol. 12, No. 2, Spring 1993: 14
Swansboro, Onslow County	Vol. 15, No. 1, Winter 1996: 14-15
Tale of Two Lost Cities, Diamond City and Dymond City	Vol. 13, No. 4, Fall 1994: 9-11
Tally Ho, The Town and Postal History of Tally Ho, North Carolina	Vol. 25, No. 4, Fall 2006: 8-9
Top Hits of 1846, The [Nags Head via Edenton to New York]	Vol. 23, No. 1, Spring 2004: 14
Two New North Carolina Fancy Cancels [Ridgeway, Washington]	Vol. 11, No. 2, Spring 1992: 11-13
Wanchese, Roanoke Island, Dare County	Vol. 25, No. 2, Spring 2006: 14-15
Waterlily, Currituck County	Vol. 13, No. 3, Summer 1994: 15
Wiles, Wilkes County, N.C.	Vol. 26, No. 4, Fall 2007: 8-10
Wilmington & Manchester Rail Road Cover	Vol. 15, No. 3, Summer 1996: 8-9
	Vol. 11, No. 3, Summer 1992: 3-4
	Vol. 24, No. 3, Summer 2005: 13

- Wilmington, Charlotte & Rutherford Rail Road Cover  
Wilson & Fayetteville Railroad Post Office  
Zouaves in North Carolina, The
- Troutman, Scott and Amy**  
Scott and Amy vs. the Light House, N. C. Cover  
St. Lewis, N.C.  
Victim of Fraud [Greensboro, UX5, 1880]
- Troutman, Scott; Crumbley, Tony L.**  
Mt. Gilead – Montgomery County  
One Place through Time – Pierces Forge, Bairds Forge,  
Lovelady, Granite and Granite Falls – Caldwell County
- Troutman, Scott; Mayes, Helen V.**  
Horner's School, Oxford, N.C.
- Venable, Marion**  
New Document on Our Most Famous Citizens, A  
[Siamese Twins Chang and Eng Bunker, Surry County]
- Vestal, Alan**  
Cana, Davie County, N.C.  
Carolina Female College  
Dr. John F. Shaffner, Confederate Surgeon
- Wally, Darryl**  
Postal Markings of Mecklenburg County North Carolina, The
- Walske, Steven C.**  
Blockade Run Mail Which Entered via North Carolina
- Warren, Daniel C.**  
Confederate North Carolina Trans-Mississippi Express Cover, A  
Confederate States Two Cent Green Covers from North Carolina
- Warren, Daniel C.; Crumbley, Tony L.**  
20 Cent Green Confederate Stamp Used from North Carolina, The
- Weiner, Richard D.**  
Early Days of Davidson College: A Student Writes Home  
Teacher Travels to NC – 1835, A
- Wetmore, Ruth Y.**  
North Carolina Post Office Names with Indian Connections  
Transylvania County Post Offices and Officials
- White, Jo Linn**  
Confederate Prison at Salisbury, The [from Rowan County  
Register]
- Wicker, Milton G.**  
Doane Cancel Additions and Corrections  
Doane Cancellation Update  
Doane Numeral Handstamp Cancels of North Carolina  
First Rural Free Delivery Route in North Carolina  
Flag Cancellation  
Quaker Postmarks of North Carolina  
Updated Listing of North Carolina Doane Cancels, An
- Wicker, Milton; Tilles, Harvey; Schoolmeester, Ken**  
Postal Markings of Greensboro, N.C.
- Wickert, W. M.**  
Dismal Swamp Canal Mail – A Mystery
- Wiley, Mary C.**  
Twin City Postal System Began in Salem in 1792  
[from *Twin City Sentinel*, May 4, 1953]
- Vol. 16, No. 1, Spring 1997: 13-14  
Vol. 23, No. 2, Summer 2004: 15  
Vol. 24, No. 2, Spring 2005: 3-4
- Vol. 9, No. 2, Spring 1990: 4-6  
Vol. 9, No. 3, Summer 1990: 6-7  
Vol. 10, No. 1, Winter 1991: 13
- Vol. 17, No. 1, Spring 1998: 5-8  
Vol. 15, No. 4, Winter 1997: 4-8
- Vol. 12, No. 4, Fall 1993: 5-6
- Vol. 17, No. 2, Summer 1998: 12-13
- Vol. 12, No. 4, Fall 1993: 15  
Vol. 8, No. 3, Fall 1989: 3  
Vol. 10, No. 3, Summer 1991: 12-14
- No. 14 (Vol. 4, No. 3), Jun. 1985: 2-18
- Vol. 24, No. 3, Summer 2005: 3-7
- Vol. 17, No. 3, Fall 1998: 10  
Vol. 17, No. 2, Summer 1998: 14-15
- Vol. 17, No. 1, Spring 1998: 12-15
- Vol. 21, No. 3, Fall 2002: 11-13  
Vol. 28, No. 2, Spring 2009: 9-10
- Vol. 11, No. 4, Fall 1992: 3-13  
Vol. 9, No. 1, Winter 1990: 3-14
- Vol. 19, No. 3, Fall 2000: 3
- Vol. 7, No. 2, Spring 1988: 13-15  
No. 8 (Vol. 3, No. 1), Feb. 1984: 5-6  
No. 6 (Vol. 2, No. 3), Aug. 1983: 2-6  
No. 13 (Vol. 4, No. 2), Apr. 1985: 1  
No. 9 (Vol. 3, No. 2), Apr. 1984: 3-7  
No. 10 (Vol. 3, No. 3), Aug. 1984: 2-5  
Vol. 5, No. 1, Jan. 1986: 3-10
- Vol. 6, No. 2, Spring 1987: 3-19
- Vol. 7, No. 2, Spring 1988: 7-10
- Vol. 5, No. 2, Apr. 1986: 7-8

**Williams, L. N.**

N. C. Uniquity is Worth \$30,000 [Franklin, N.C. Postmaster Provisional, from *Stamp Collector*, Apr. 25, 1992]

Vol. 11, No. 3, Summer 1992: 10

**Winter, Richard F.**

Beautiful North Carolina Confederate Covers - All Fake!  
Charleston, S.C. to Belgium via Wilmington & Raleigh Railroad  
Courthouse and Post Office Mysteries, #1 [Snow Hill]  
Courthouse and Post Office Mysteries, #2 [Scuppernong]  
Cowansville to Germany  
Elmwood Post Office Postmark Book  
England to Wilmington  
First Post Road into Hyde County, The  
Hot Springs, North Carolina – A World War I Internment Camp  
Leo Postmark Update  
Margie Pfund Memorial Postmark Museum, The  
“New Asheville Marking – Type 3.5” – Revisited  
New North Carolina Postmark Catalog  
New SHIP Marking of Plymouth  
North Carolina Postal History Project Underway [State Archives]  
Pre-1800 North Carolina Postmarks  
Ridgeway to London  
Rocky Mount to Paris  
Salisbury to Houston, Republic of Texas  
Salisbury to Leipzig, Saxony  
Siskin North Carolina Covers at Auction [Colonial, Early U.S.]  
Solution to Scuppernong Mystery  
Steamship 20 Cent Cover Re-directed from Swansboro  
Stroupe, Vernon S., Jr. (death notice)  
William Hooper Letter, The  
Wilmington to London  
Wilmington to Paris, France  
Wilmington & Raleigh Railroad Steamboats

Vol. 21, No. 1, Spring 2002: 3-6  
Vol. 16, No. 1, Spring 1997: 5-7  
Vol. 24, No. 1, Winter 2004-05: 14  
Vol. 24, No. 1, Winter 2004-5: 15  
Vol. 17, No. 1, Spring 1998: 10-11  
Vol. 26, No. 2, Spring 2007: 12-14  
Vol. 17, No. 3, Fall 1998: 11-13  
Vol. 21, No. 2, Summer 2002: 11-15  
Vol. 27, No. 1, Winter 2008: 4-13  
Vol. 28, No. 4, Fall 2009: 13-14  
Vol. 27, No. 3, Summer 2008: 14-15  
Vol. 26, No. 2, Spring 2007: 15  
Vol. 26, No. 1, Winter 2006-07: 12-13  
Vol. 26, No. 3, Summer 2007: 14-15  
Vol. 23, no. 2, Summer 2004: 12  
Vol. 24, No. 2, Spring 2005: 7-11  
Vol. 16, No. 3, Fall 1997: 11-13  
Vol. 18, No. 1, Summer 1999: 4-6  
Vol. 18, No.3, Winter 2000: 5-6  
Vol. 24, No. 2, Spring 2005: 5-6  
Vol. 25, No. 1, Winter 2005-06: 14  
Vol. 24, No. 2, Spring 2005: 12-13  
Vol. 26, No. 1, Winter 2006-07: 6-11  
Vol. 25, No. 2, Spring 2006: 11  
Vol. 21, No. 2, Summer 2002: 3-5  
Vol. 16, No. 4, Winter 1997-98: 3-5  
Vol. 16, No. 2, Summer 1997: 13-15  
Vol. 23, No. 3, Fall 2004: 9-13

**Worrell, W. Marvin, Jr.**

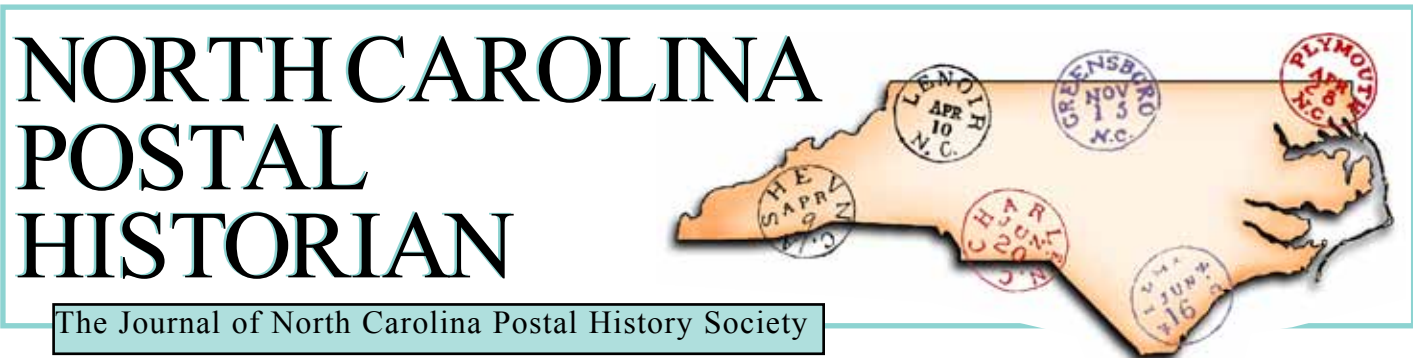
Post Offices of Maney’s Neck Township, Hertford County, The

Vol. 5, No. 4, Oct. 1986: 7-9

**Zamplas, Pete**

Davidson River Post Office and Train Station are Remembered  
[from *Transylvania Times*, Nov. 7, 1988] ■

Vol. 8, No. 1, Winter 1989: 10-11



## Subject Index

By Maurice M. Bursey

*North Carolina Postal History Society Newsletter* (Issues 1-15)  
*NCPHS Newsletter* (Issues 16-49, Volume 5, No. 1 – Volume 13, No. 2)  
*North Carolina Postal Historian*, Issues 50 – present, Volume 13, No. 3, - present)

Only keywords are supplied in this index. Citations are to “volume/issue:pages.” For the earliest issues, for which volume numbers were assigned retroactively, a concordance between volume/issue numbers in this index and the whole numbers originally assigned follows:

1/1*	No. 1	2/2*	No. 5	3/2*	No. 9	4/2*	No. 13
1/2*	No. 2	2/3*	No. 6	3/3*	No. 10	4/3*	No. 14
1/3*	No. 3	2/4*	No. 7	3/4*	No. 11	4/4*	No. 15
2/1*	No. 4	3/1*	No. 8*	4/1*	No. 12		

In this index, the asterisk after a volume/number reference calls attention to either of two problems. First, for Vols. 1 through 4, the absence of these numbers in the original version (instead, the user must find the whole number as given in the preceding short table, noting that whole No. 8 was labeled No. 7 in error; and second, for later issues, corrected volume/number references are given if the original was misnumbered. The concordance of these appears before the Author Index. Full titles, full names of authors, and references to dates of issue are given in the Author Index.

### Advertising Covers

Census (Baum)	26/2:4-11
Medical remedies (Roughton)	20/4:6-8
Tobacco (Crumbley)	28/1: 3-8

<i>Petitions for Pardons, 1865-67:</i> Koonts (Stroupe)	15/1:2
<i>Self-Sufficiency at All Costs:</i> Ridgway (Cohn)	8/2:4

### African-American

James City (Crumbley)	15/3: 3-4
Method (Crumbley)	20/3: 10-11
Oberlin (Crumbley)	30/3: 10-11
Postmasters (Justesen)	25/2:3-11

### Cachets

Boone, Richard P., maker (Crumbley)	19/1:8-11
Mendenhall, Shumaker, makers (Bursey)	28/4:8-11
Raft Swamp anniversary (Doanes)	15/2:13-14
Swansboro (Herring)	6/2:23

### Air Mail

A. C. Roessler (Crumbley)	22/3: 11-12
Airport dedications (Crumbley)	22/1: 3-10
All-North Carolina airmail week, 1937 (Crumbley)	22/4:3-19
All North Carolina air mail flight, 1937 (Crumbley)	16/4:6-10
Charlotte air mail facilities (Crumbley)	22/3: 16
Contract Air Mail first flights (Crumbley)	22/2: 3-17
Crash mail (Crumbley)	22/2: 17
First air mail flight in NC, Wilmington (O’Sullivan)	5/4:3-5
First flights, contract (Crumbley)	22/2:3-17
Flights, official (Crumbley)	22/3:14-15
History (Crumbley)	2/1*:1-3
National air mail week, 1938 (Crumbley)	4/2*:5-6
Wright Brothers’ first flight, reporting attempts (Gallico)	22/3:13
Wright Pylon Dedication (Crumbley)	22/4:21

### Cancellations

1930 type “E” 4-bar (Crumbley)	14/4:3-8
Bartonsville (Crumbley)	20/2:3-5
Chapel Hill, 1794, type 0.5 (Ed.)	20/3: 3
Charlotte (Crumbley)	3/4*:1-10
Charlotte, 1897 tractor tire (Crumbley)	10/2*:8-11
Doane (Crumbley)	2/2*:2-3
Doane (Wicker)	2/3*:2-6
Doane additions & corrections (Wicker)	7/2:13-15
Doane update (Crumbley)	15/2:7-12
Doane update (Wicker)	3/1*:5-6
Doane update (Wicker)	5/1:3-10
Doanes online (Crumbley)	24/2:14-15
Doremus (Crumbley)	2/4*:6-7
Elmwood post office postmark book (Winter)	26/2:12-14
Embossed (Crumbley)	15/3:10-11
Fancy, census (Crumbley)	11/3:7-9
Fancy, Charlotte (Crumbley)	8/2:4
Fancy, Patterson (Crumbley)	11/3: 5
Fancy, Southport (Crumbley)	6/4:13
Flag (Wicker)	3/2*:3-7

### Book Reviews

<i>Dirty Ankle Is Far From Bath:</i> King (Crumbley)	14/2:15
--	---------

Mount Tirzah, 1796 (Ed.)	10/3*:15	2¢ green issue (Crumbley)	14/4:14
Murfreesborough, 1808 (Ed.)	13/4:16	3¢ rate? (Crumbley)	18/3:9-10
Philatelic truck FDC (Crumbley)	3/1*:3-5	7, largest known multiple (Crumbley)	16/4:3
Post offices opened during Doane period (Boubelik)	11/2:8-10	20¢ green cover (Warren, Crumbley)	17/1:12-15
Postmark book, Elmwood post office (Winter)	26/2:12-14	Addressed to Swann's Station (Homesly)	10/4:14-15
Postmark catalog, new (Winter)	26/1:12-13	Advertising census (Baum)	26/2:4-11
Postmark museum, Margie Pfund memorial (Winter)	27/3:14-15	Blockade mourning cover, frameline (Monroe)	21/4:11
Pre-1800 postmarks (Winter)	24/2:7-11	Bonitz patriotic envelopes (Bursej)	28/1:3-8, Addendum
Quaker	3/3*:2-5	Carolina City provisional (Crumbley)	5/4:10-14
Raleigh, Type 3, size (Ed.)	20/3 3	Confederate Post Office Department letters (Stets)	16/1:7
Salem (Crumbley)	5/2:3-5	Dunn's Rock (Ed.)	7/3:14
<b>Civil War</b>		Dunnsville (Crumbley)	27/3:3
Magnus envelopes related to North Carolina (Bursej)	27/4:3-10	Fantasies (Crumbley)	13/4:4
Stokes County peach brandy making (S. Troutman)	7/3:13	Flat Rock (Crumbley)	20/2:12-15
<b>College Covers</b>		Frameline (Lohr)	25/1:8
Carolina Female College (Vestal)	8/3:3	Frameline uses (Crumbley)	19/1:7
Chowan College (Crumbley, McDowell)	20/3:5-8	Frameline, blockade, mourning (Monroe)	21/4:11
Chowan Female Institute (Crumbley, McDowell)	20/3:5-8	Independent statehood cover (Monroe)	21/4:11
Davidson College (Crumbley)	10/4:2	Largest known multiple, 7 (Crumbley)	16/4:3
Davidson College, illustrated (Ed.)	23/3:15	Lenoir provisional (Crumbley)	7/3:3-7
Davison College, student letter (Weiner)	21/3:12-13	"Lowenburg & Bro." patriotic envelopes, Beaufort (Bursej)	28/2:11-14
Davis School, military boarding (Crumbley)	24/3:8-9	Mourning, blockade, frameline (Monroe)	21/4:11
Glen Anna Female Seminary (Crumbley)	15/3:10-11	Oxford (Mayes, S. Troutman)	12/3:3-14
Hillsborough Military Academy (Crumbley)	23/1:3-9	Patterson fancy cancels (Crumbley)	11/3:5
Horner & Horner School (Ed.)	12/3:15	Raleigh 68XU1, new variety (Crumbley)	27/3:11-13
Horner's School (S. Troutman, Mayes)	12/4:5-6	Raleigh bayonet factory (Perkinson, Crumbley)	21/1:11-12
North Carolina Institution, Deaf, Dumb, Blind (Crumbley)	28/4:3-7	Raleigh/Saxapahaw turned cover (Holt)	21/4:7-8
University of North Carolina (Holt)	17/4:3-11	Roanoke Island (Jaronski)	4/2*:7-9
Wake Forest College (Crumbley)	20/4:3-5	Roanoke Island (Jaronski)	7/3:10-12
Wesleyan Female Academy (Crumbley)	20/2:12-15	Roanoke Island, Confederate letter after battle (S. Troutman)	25/4:10-13
Murfreesborough (Crumbley)		Railroads and mail (Crumbley)	16/1:8-12
Wesleyan Female Institute, Murfreesboro (Crumbley, McDowell)	20/3:5-8	Salem (Crumbley)	5/2:3-5
<b>Colonial</b>		Salisbury, prison (Crumbley)	19/3:4-6
Earliest, 1759 (Crumbley)	10/2*:6-7	Salisbury, prison (Harrison)	19/3:7-13
Hugh Finlay journal, 1773 (Ed.)	9/4:9-15	Salisbury, prison (White)	19/3:3
New Bern, 1770 cover (Ed.)	20/3:3-4	Saxapahaw turned cover (Holt)	21/4:7-8
Pre-1800 postmarks (Winter)	24/2:7-11	Secession date (Crumbley)	15:1/12-13
Siskin auction (Winter)	25/1:14	Shaffner, John T., Surgeon (Vestal)	10/1:12-14
Wilmington, 1769, 1772 covers (Ed.)	20/3:3-4	Statesville covers (Bush)	7/3:8-9
<b>Confederates</b>		Trans-Mississippi express cover (Warren)	17/3:10
2¢ green covers (Crumbley)	14/2:3-6	Unique provisionals (Crumbley)	10/2*:8-11
2¢ green covers (Warren)	17/2:14-15	"Whitaker, Wilmington" patriotic envelopes (Bursej)	28/2:4-8
		White Road (B. Green, M. Green)	10/2:13
		Wilmington 7- bar killer on 8 (Crumbley)	11/4*:6
		Wilson, express company label (Crumbley)	9/2:6-8



<b>Early (1776-1846)</b>			
6¼¢ rate (Crumbley)	18/1:6-10	Post cards and rates (Stets)	15/4:3-4
6¼¢ rate (Crumbley)	27/2:12	Spencer (W. Harter, M. Harter)	6/3:13-15
Abbotts Creek, paid 3 (B. Green)	9/2:3	Wright brothers, 25th anniversary (Stroupe)	22/3:3-4 22/3:3-4
Bath, 1777 (Crumbley)	25/1:3-7	<b>Early 21st Century (2001- )</b>	
Bill of Rights copy (Crumbley)	23/2:13-15	Candidate post offices near Charlotte for discontinuance (Stroupe)	23/1:10
Chapel Hill, 1794, Type 0.5 marking (Ed.)	20/3:3	Current postal history(Crumbley)	26/1:3-5
Chapel Hill, 1827 (Crumbley)	5/4:17	Unimproved mail delivery (Brown)	24/3:15
Davidson College, student letter, 1837 (Weiner)	21/3:11-13	<b>Express</b>	
Declaration of Independence copy [title error] (Crumbley)	23/2:13-15	Confederate company label (Crumbley)	9/2:6-8
First Postmistress (Crumbley)	28/2:14-15	Mail, 1836-1839 (Crumbley)	17/2:3-7
Greensboro, 2 postmasters, 1811 (Stets)	14/1:6	<b>Fakes</b>	
Hazard, Ebenezer, journal, 1777-1778 (Johnston)	10/1:4-13	Confederate fake covers (Winter)	21/1:3-6
Hooper, William, letter, 1776	21/2:3-5	Confederate fantasies (Crumbley)	13/4:4
Hyde County, first post road into, 1800 (Winter)	21/2:11-15	Greensboro Paid 10 patriotic cover (Stroupe)	13/4:11
Independent State Periods, NC, TN	15/2:12	U.S.S. Asheville cover (Crumbley)	19/1:3
Jamestown, paid 1 (B. Green)	9/2:3	<b>Indexes</b>	
Journal, Ebenezer Hazard, 1777-1778 (Johnston)	10/1:4-13	1982-1997 (Ed.)	15/4:12-15
Mount Tirzah, 1796 cover (Ed.)	10/3:15	1982-2001 (Ed.)	20/4:14-19
Murfreesboro cover, 1808 (Ed.)	13/4:16	Postal history bibliography (Crumbley)	4/1*:5-9
Newbern post office advertisement, 1797 (Ed.)	20/3:9	Postmaster finder - postal history database (Ed.)	20/4:8
Newbern roulettes, 1851 Issue (Ed.)	15/1:10-11	<b>Later 19th Century (1865-1900)</b>	
North Carolina, 1789-1795, part 1 (Hecht)	8/1:12-19	1869 issue (Crumbley)	15/1:3-9
North Carolina , 1789-1795, part 2 (Hecht)	8/3:4-12	1869 update (Richardson)	26/4:12-13
North Carolina, 1789-1795, epilogue (Stets)	8/3:12-14	Davis School (Crumbley)	24/3:8-9
Oxford (Mayes, S. Troutman)	12/3:3-14	Fort Defiance (Lohr)	11/2:3-7
Oxford (Stets)	12/4:3-4	Free City Delivery (Ertzberger)	4/2*:3-5
Post Roads, 1820 (Tilles)	3/3*:5-6	Fraud Victim, Greensboro, 1880 (S. Troutman, A. Troutman)	10/1:13
Pre-1800 postmarks (Winter)	24/2:7-11	Graham (Holt)	20/3:7-9
Salem, 1796 (Ed.)	6/2:24	Lenoir family correspondence (Lohr)	11/2:3-7
Salem, 1833, new fancy cancel (Crumbley)	5/2:5	Oxford (Mayes, S. Troutman)	12/3:3-14
Scotland Neck (McDowell)	7/4:3-8	Raleigh, early reconstruction letter (Ed.)	19/3:14-15
Scuppernong, 1803, early cover, mystery (Winter)	24/1:15	Raleigh, early reconstruction letter (Crumbley)	20/2:8-10
Scuppernong, solution to mystery (Winter)	24/2:12-13	Reopening post offices, 1865-70 (Stanton)	6/3:3-11
Snow Hill, 1803, earliest known cover, mystery (Winter)	24/1:14	RFD, first (Wicker)	4/2*:1
Siskin auction (Winter)	25/1:14	RFD, first, China Grove (Lasley)	4/2*:1-3
Teacher travels, 1835 (Weiner)	28/2:9-10	Rural Mail Service (Arthur)	16/2:3-4
<b>Early 20th Century (1901-1950)</b>		Scotland Neck (McDowell)	7/4:3-8
Camp Sutton, POW camp (Crumbley)	18/2:9-11	Unimproved mail delivery (Brown)	24/3:5
Coal mining disaster, 1925 (Otterborough)	13/2:3-8	Warren Plains, 1895 advertisement (Ed.)	21/4:15
First air mail flight in North Carolina (O'Sullivan)	5/4:3-5	<b>Later 20th Century (1951-2000)</b>	
German POW Camp, 1944-46 (Crumbley)	18/2:9-11	Bicentennial of statehood cancels (Tilles)	26/3:8-12
		Greensboro on a shoestring (Sparks)	6/2:21-22
		Kennedy FDC (Scheuer)	11/3:14-15
		North Carolina Museum of Art painting, 1993 Christmas stamp (Ed.)	11/5*:15
		Postal history exhibit opens (Ed.)	18/1:3-4
		Postal Service sponsors 1992	16/4:12-13

Olympic Games (Estus)		Jaronski, Stefan T.	26/2:3,14
Purple Machine Cancels (Crumbley)	20/1:9-11	McDowell, Harry L.	22/4:20
Sprayed-on postmarks (S. Troutman)	12/2:12-13	Perkinson, Phillip	26/3:3,16
Statehood bicentennial cancels (Tilles)	26/3:8-12	Roughton, Jerry R.	26/4:3
“Unofficial” self-inking postmarkers (Stets)	7/2:3-6	Sapperstein, Perry M.	16/1:2
<b>Mechanization</b>		Scott, George	7/1:19
Industrial revolution, part 1 (Crumbley)	21/4:3-7	Stroupe, Vernon S., Jr.	25/2:11
Industrial revolution, part 2 (Crumbley)	22/1:11-17	Stroupe, Vernon S., Jr.	25/3*:3
<b>Military</b>		Tilles, Dr. Harvey G.	26/1:3
Camp Davis (S. Troutman)	11/5:14-15	Wall, Phillip	27/2:3
Camp Hoffman (Nelson)	18/2:12-13	Weiner, Richard D.	28/1:9
Camp Sutton POW camp (Crumbley)	18/2:9-11	Wicker, Milton G.	8/1:2
Encyclopedia, part 2 (Crumbley)	12/2:3-8	<b>People</b>	
Fayetteville, arsenal/armory (Hall)	28/3:9-14	Allen family, Tally Ho (S. Troutman)	11/2:13
Fort Johnston (S. Troutman)	24/3:11-12	Bunker, Chang & Eng (Venable)	17/2:12-13
German POW camp, 1944-1946 (Crumbley)	18/2:9-11	Confederate surgeon Shaffner (Vestal)	10/3:12-14
Hot Springs World War I internment camp (Winter)	27/1:4-13	Durants of Durant’s Neck (S. Troutman)	26/3:7
Raleigh bayonet factory (Perkinson, Crumbley)	21/1:11-12	First federally appointed woman postmaster (Stroupe)	25/1:13
<b>Mourning Covers</b>		First postmistress (Crumbley)	28/2:14-15
Blockade mourning cover, frameline (Monroe)	21/4:11	Fraud victim, Greensboro, 1880 (S. Troutman, A. Troutman)	10/1:13
Mourning covers (Crumbley)	23/3:3-8	Griffin, Luther S. (Griffin)	7/1:13-14
<b>Naval</b>		Hedrick, Benjamin Sherwood (Bursey)	27/3:4-10
4 U.S.S. Raleighs (Crumbley)	18/2:3-8	Henderson, John Steele (Arthur)	16/2: 3-4
Blockade mail through Wilmington (Walske)	24/3:3-7	Hooper, William (Winter)	21/2:3-5
Dismal Swamp Canal mail (Wickert)	7/2:7-10	Johnston, James C. (Schoolmeester)	6/1:10-11
England to Wilmington (Winter)	17/3:11-13	Keehln, O. A. (Crumbley)	5/2:3-5
Fast freight from Baltimore through Wilmington (S. Troutman)	25/1:9	Lenoir family (Lohr)	11/2:3-7
Fighting ships called “North Carolina” (Crumbley)	14/3:3-13	MacRae, Duncan, Fayetteville postmaster (Roughton)	25/1:10-11
Lightship service (S. Troutman)	10/1:3-4	Pfund, Margie, postmark museum (Winter)	27/3:14-15
North Carolina ship names (Crumbley)	19/2:3-15	Shaffner, Dr. John F. (Vestal)	10/3:12-14
Phebe (S. Troutman)	17/3:6-9	Siamese twins (Venable)	17/2:12-13
Steamship 20 marking, redirected from Swansboro (Winter)	26/1:6-11	Spencer, postmasters (Stout)	6/4:12
U.S.S. Asheville fake (Crumbley)	19/1:3	Steamship 20 cent cover, redirected from Swansboro (Winter)	16/1:6-11
Wilmington & Fayetteville river route marking (Homesly)	10/4:19	Stroupe, Vernon S., Jr., collection sampler (Crumbley)	25/3:3-15
Wilmington & Raleigh Railroad steamboats (Winter)	23/3:9-13	Teacher, 1835 (Weiner)	28/2:9-10
<b>Obituaries, Death Notices, &amp; Biographical Sketches</b>		Transylvania County post office officials (Wetmore)	9/1:3-14
Allen, John	28/2:3	<b>Postal Notes</b>	
Caldwell, Jean B.	24/4:15	Company Shops/Burlington (Ed.)	19/1:4-6
Crumbley, Tony L.	27/1:3,16	<b>Post Offices</b>	
Harper, William	9/4:2	Aquone (Scott)	5/3:14
Harris, James P.	15/2:2	Davidson River (Zamplas)	8/1:10-11
Holt, W. Clary	22/4:20	First site survey submitted (Stroupe)	9/3:7-9
Hunt, Robert H.	21/3:12	Grandy (Schoolmeester)	5/3:14-16
		Grimshawes (Ed.)	4/4*:14
		Hertford (Schoolmeester)	5/3:14-16
		Indian connected names (Wetmore)	11/4:3-13
		Jarvisburg (Schoolmeester)	5/3:14-16

Natural Wells (Roughton)	16/2:5	Norfolk & Western, Ashe County (Hensley)	15/3:5-7
Odd names (Goerch)	9/3:10-12	Petersburg & Roanoke Railroad (Ed.)	7/4:14
On post cards (Crumbley)	25/1:14-15	Pre-Civil War Railroads (S. Troutman)	10/4:3-18
Puella (Sherrill)	14/1:14-15	Railroads and mail (Crumbley)	16/1:8-12
Raft Swamp challenge (Stroupe)	8/2:12	Raleigh & Gaston, slow mail (Stroupe)	6/4:10
Raft Swamp, oldest building? (Doares)	8/2:8-11	Scuppernong (Winter)	24/1:15
Raft Swamp, time warp (Stroupe)	8/2:11	Snow Hill (Winter)	24/1:14
Salvo (Leland)	7/4:12-13	Statesville Line (Crumbley)	10/4:2
Salvo to reopen? (Ed.)	12/4*:13	Tweetsie (S. Troutman)	15/2:15
Spencer (W. Harter, M. Harter)	6/3:13-15	Virginia Creeper (Hensley)	15/3:5-7
Transylvania County (Wetmore)	9/1:3-14	Wilmington, Charlotte & Rutherford Railroad (S. Troutman)	16/1:13-14
Wendell site survey (Mattox)	11/5:13	Wilmington & Manchester Railroad (S. Troutman)	24/3:13
<b>Precancels</b>		Wilmington & Raleigh Railroad (Crumbley)	28/1:11-15
Overview (Postlewait)	8/2:5-7	Wilmington & Raleigh Railroad, cover, Charleston to Paris (Winter)	16/1:5-7
Roessler, 650 (Crumbley)	22/4:20	Wilmington & Raleigh Railroad Steamboats (Winter)	23/3:9-13
<b>Pre-Civil War (1847-1860)</b>		Wilmington & Rutherfordton RPO (S. Troutman)	14/4:15
1847 issue (Richardson)	16/3:3-10	Wilson & Fayetteville Railroad (S. Troutman)	23/2:15
1851 issue delivered, July 1851 (Richardson, Schoolmeester)	9/3:3-5	<b>Ration Stamps</b>	
Newbern roulettes, 1851 issue (Ed.)	15/1:10-11	World War II (Crumbley)	20:1/5-8
New Bern roulettes (Hulme)	15/1:10	<b>Revenue Stamps</b>	
Oxford (Mayes, S. Troutman)	12/3:3-14	First federal issue (Crumbley)	12/4*:8-10
Raleigh type 3 CDS, size (Ed.)	20/3:3	Hunting and fishing (McRee)	6/4:6-9
Scotland Neck (McDowell)	7/4:3-8	Hunting and fishing, 1986-1988 (McRee)	9/2:8-11
Scott 1, 2; quantities shipped, 1848-1851 (Ed.)	1/2*:2	Hunting and fishing, 1988-1991 (McRee)	11/5:8-12
Shallotte, 1858 provisional (Crumbley)	10/2*:8-11	Sales tax coupons (S. Troutman)	25/2:12-13
Warrenton cover used as notepad (Sanford)	12/2:11	<b>Towns and Markings</b>	
<b>Railroads, Highways, and Markings</b>		7-1-71 FDCs (Crumbley)	17/3:14-15
Atlantic & East Carolina Railroad (S. Troutman)	18/3:7	Abbotts Creek paid 3 (B. Green)	9/2:3
Atlantic, Tennessee & Ohio Railroad (Crumbley)	10/4:2	Abshers (S. Troutman)	11/3:11-13
Atlantic, Tennessee & Ohio Cover (S. Troutman)	26/3:13	Agate (Worrell)	5/4:7-9
Beaufort & Goldsboro RPO (S. Troutman)	18/3:7	Akako (S. Troutman)	11/5:3-7
Boone & Johnson City (S. Troutman)	15/2:15	Asheville (Stroupe, Crumbley)	24/4:3-8
Clinchfield Railroad (S. Troutman)	15/2:5-7	Asheville, new, type 3.5 (Stroupe)	24/4:9
Confederate mails (Crumbley)	16/1:8-12	Asheville, new, type 3.5, comments (Winter)	26/2:15
Dante & Spartanburg RPO (S. Troutman)	15:2/5-7	Apex (Crumbley)	20/4:3-5
Fourth railroad over Blue Ridge (S. Troutman)	15/2:5-7	Axtell (Perkinson)	18/3:11
Goldsboro & Morehead City agent marking (S. Troutman)	26/4:14-15	Bairds Forge (S. Troutman, Crumbley)	15/4:4-8
Highway Post Offices (Tilles)	3/1*:11-13	Bartonsville (Worrell)	5/4:7-9
Individual railroad clerk markings (S. Troutman)	20/3:13-14	Bath, Dirty Ankle (Crumbley)	14/2:15
Last steam railroad (Hensley)	15/3:5-7	Bath (Crumbley)	25/1:3-7
Lenoir & Lancaster RPO (S. Troutman)	24/3:10-11	Bear Poplar (Crumbley)	16/1:5-6
Mackey Ferry & Belhaven RPO (S. Troutman)	18/3:7	Belvidere (S. Troutman)	16/4:15
Norfolk & Raleigh RPO (S. Troutman)	18/3:7	Bicentennial of Statehood Cancels (Tilles)	26/3:8-12
		Black Cities of Wake (Crumbley)	20/3:10-11
		Blue Ridge Rural Station (Crumbley)	16/3:13

Burlington (Bolden)	13/4:8-9	Fancy Cancels (Schoolmeester)	8/1:3-9
Camp Greene (Crumbley)	12/2:9-10	Fayetteville, arsenal/armory (Hall)	28/3:9-14
Camp Sutton, POW camp (Crumbley)	18/2:9-11	Fayetteville, D. MacRae (Roughton)	25/1:10-11
Cana (Vestal)	12/4:15	Fayetteville paid, oval sunburst (Stroupe)	4/2*: 9-10
Carolina City provisional (Crumbley)	5/4:10-14	Flat Rock (Crumbley)	20/2:12-15
Cary (Crumbley)	20/4:3-5	Forsyth County, 1841-1986 (Ertzberger)	5/2:9-20
Chapel Hill, 1827 (Crumbley)	5/4:14	Fort Defiance (Lohr)	11/2:3-7
Chapel Hill provisional (Crumbley)	10/2*:8-11	Fort Johnston via Smithville (S. Troutman)	24/3:11-12
Chapel Hill provisional paid 5 (Holt)	21/1:15	Four Oaks to Dixie Hound Kennels (Crumbley)	18/3:3-4
Charleston SC to Belgium, Wilmington & Raleigh Railroad (Winter)	16/1:5-7	Franklin provisional (Crumbley)	10/2*:8-11
Charlotte (Crumbley)	3/4*:1-10	Franklin provisional (Williams)	11/3:10
Charlotte, 1859 visit (Crumbley)	10/1:14-15	Free City Delivery (Ertzberger)	4/2*:3-6
Charlotte, 1897 tractor tire (Crumbley)	10/2*:8-11	Gap Creek (S. Troutman)	16/4:14
Charlotte air mail facilities (Crumbley)	22/3:16	Gaston provisional (Crumbley)	10/2*:8-11
Charlotte, fancy (Crumbley)	8/2:4	German POW camp, 1944-1946 (Crumbley)	18/2:9-11
Cherry Lane (Crumbley)	17/2:8-11	Glen Anna Female Seminary, Taylorsville, embossed (Crumbley)	14/2:10-11
China Grove (Crumbley)	16/2:4-5	Gloucester (S. Troutman)	15/1:14-15
China Grove, first RFD (Lesley)	4/2*:1-3	Green Level (Crumbley)	20/4:3-5
Cobb's (S. Troutman)	23/3:13-14	Greensboro (Wicker, Tilles, Schoolmeester)	6/2:3-19
Como (Worrell)	5/4:7-9	Greensboro/Greensborough (Crumbley)	13/4:12-15
Company Shops (Bolden)	13/4:8-9	Greensboro provisional (Crumbley)	10/2*:8-11
Company Shops (Crumbley)	13/2: 9-15	Gold Hill (Crumbley)	16/1:14-15
Company Shops, Refugee Banking (Holt)	20/1:3-4	Granite (S. Troutman, Crumbley)	15/4:4-8
Concord (Crumbley, Stroupe)	9/4:3-8	Granite Falls (S. Troutman, Crumbley)	15/4:4-8
Confederate-only Dunnsville (Crumbley)	27:3:3	Hertford (Stroupe)	7/4:10-12
Corner cards as markings (Crumbley)	17/1:3-5	Hillsboro provisional (Crumbley)	10/2*:8-11
County cancels (Ertzberger)	4/4*:3-13	Hillsborough (Ed.)	14/1:16
Cowansville to Germany (Winter)	17/1:10-11	Hillsborough, update (Stroupe)	14/2:16
Dare County (Crumbley)	7/1:3-12	Hillsborough Military Academy (Crumbley)	23/1:3-9
Davidson College (Ed.)	23/3:15	Hog Island (Lupton)	15/4:9-10
Davidson College (Crumbley)	21/3:3-10	Holly Springs (Crumbley)	20/4:3-5
Davie County (Ertzberger)	5/3:3-13	Hotel fancy cancel, 1857 (Stroupe)	7/2:10
Diamond City (S. Troutman)	23/1:14	Hot Springs, World War I internment camp (Winter)	27/2:4-13
Dillsboro (Parris)	6/4:11-12	Houck (S. Troutman)	11/5:3-7
Dirty Ankle, Bath (Crumbley)	14/2:15	Hoylesville (S. Troutman)	12/2:14
Dockery (S. Troutman)	11/3:11-13	Hyde County, first post road (Winter)	21/2:11-15
Duck (S. Troutman)	21/4:13-14	James City (Crumbley)	15/3:3-4
Dunn's Rock (Ed.)	7/3:14	Jamestown (B. Green)	9/2:3
Dunnsville (Crumbley)	27/3:3	Jerusalem (Crumbley)	15/2:3-5
Durant's Neck (S. Troutman)	26/3:7	Jerusalem (S. Troutman)	7/2:11-12
Durham, tobacco (Crumbley)	21/1:7-10	Joynes (S. Troutman)	11/3:11-13
Dymond City (S. Troutman)	23/1:14	Kawana (Fricke)	11/2:14-15
Edenton straight-line (Stroupe)	11/5:14	Kill Devil Hills, postmaster alters history (S. Troutman)	22/3:5-10
Edgemont (S. Troutman)	11/5:3-7	Kittrell's Springs (Crumbley)	24/4:10-14
Elizabeth City (Stroupe)	6:1/12-14	Kitty Hawk, derivation of name (S. Troutman)	22/3:4
Elizabeth City (Stroupe)	7/4:10-12		
Elizabethtown (Stroupe)	7/4:10-12		
Elmwood Post Office postmark book (Winter)	26/2:12-14		
Embossed postmark (Crumbley)	14/2:10-11		
Englehard (S. Troutman)	13/4:6-7		
Fallstown (Nelson)	18/2:15		

Lake Landing (S. Troutman)	14/1:12-13	Oxford, Horner's School (S. Troutman, Mayes)	12/4:5-6
Lenoir provisional (Crumbley)	7/3:3-7	Pamlico County (Crumbley)	23/2:3-10
Leo (Richardson)	8/2:3	Pamlico County (S. Troutman)	23/2:10-11
Leo, Update (Winter)	28/4:13-14	Pantego, 1829 (Ed.)	6/1:17-18
"Light House" (S. Troutman, A. Troutman)	9/2:4-6	Pantego to Tuscarora, RPO covers (S. Troutman)	18/3:7
Lillington to Dixie Hound Kennels (Crumbley)	18/3:3-4	Patterson fancy (Crumbley)	11/3:5
Lotta (Worrell)	5/4:7-9	Petersburg & Roanoke Rail Road, 1845 (Ed.)	7/4:14
Lovelady (S. Troutman, Crumbley)	15/4:4-8	Pierces Forge (S. Troutman, Crumbley)	15/4:4-8
Low Gap (S. Troutman)	26/4:11	Pine Bluff (Crumbley)	26/3:4-6
Lupton (Lupton)	15/4:9-10	Pine Hall, Rural Delivery Route No. 1 (Ed.)	5/1:12
Madison (Crumbley)	25/4:4-7	Plymouth (S. Troutman)	25/4:14
Madison, 166 years (Bokoski)	6/1:3-10	Plymouth, SHIP marking (Winter)	26/3:14-15
Mamie (S. Troutman)	19/1:15	Portsmouth (S. Troutman)	25/1:8-9
Maney's Neck Township (Worrell)	5/4:7-9	Portsmouth Island (Crumbley)	26/4:4-7
Manuscript markings (Tilles)	5/5:17	Postal history basics (Stroupe)	14/2:8-14
Margarettsville (S. Troutman)	10/3:10	Postal history basics, errors in (Stroupe)	14/3:14
Marking updates (Ed.)	20/4:2	Postal history project, State Archives (Winter)	23/2:12
Marshallberg (S. Troutman)	15/1:14-15	Postmark catalog (Winter)	26/1:12-13
Martindale (Crumbley)	12/4*:11	Postmarkers, "unofficial" self-inking (Stets)	7/2:3-6
Mashoes, sell out (Sharpe)	10/2:7	Postmarks or cinderellas? (Stroupe)	15/3:10-11
Mecklenburg County (Wally)	4/3*:2-18	Postmaster cancels (Ertzberger)	4/4*:3-13
Mecklenburg County RFD system (Ertzberger)	14/1:8-11	Purple Machine Cancels (Crumbley)	20/1:9-11
Method (Crumbley)	20/3:10-11	Raft Swamp (Doares)	15/2:13-14
Mica mining towns (S. Troutman)	16/4:14	Raft Swamp, National Preservation Award (Ed.)	10/2*:12
Military bases (Crumbley)	12/2:3-8	Raleigh (Stroupe)	7/4:10-12
Mortimer (S. Troutman)	11/5:3-7	Raleigh, new type, 18.5 (Stroupe)	25/1:12-13
Mount Gilead (S. Troutman)	15/4:11	Raleigh reconstruction letter (Ed.)	19/3:14-15
Mount Gilead (S. Troutman, Crumbley)	17/1:5-8	Raleigh, teacher travels, 1835 (Weiner)	28/2:9-10
Murfreesboro (Stroupe)	13/3:16	Riddicksville (Worrell)	5/4:7-9
Murfreesboro, Wesleyan Female Academy, Female Institute, Chowan College (Crumbley)	20/3:5-8	Ridgeway (S. Troutman)	13/3:15
Murphy, manuscript circular date stamp	12/4:12	Ridgeway to London (Winter)	16/3:11-13
	(Stroupe)	Roanoke Island, 1835, Elizabeth City CDS (Ed.)	7/1:20
Museum, Margie Pfund postmark	27/3:14-15	Roanoke Island, 1835 (S. Troutman)	7/2:15
Nags Head, 1846 (S. Troutman)	25/2:14-15	Robeson County (Crumbley, Wetmore)	21/1:13-14
Newbern, independent statehood cover (Monroe)	21/4:12	Rocky Mount to Paris (Winter)	18/1:4-6
New Berne or Newbern? (Stroupe)	13/4:5	Rural Station, Blue Ridge (Crumbley)	16/3:13
Newbern post office advertisement, 1797 (Ed.)	20/3:9	Rural Station Update (Rupert, McCord)	16/3:14-15
Garden, Quakers (Ed.)	7/2:16	Rural Stations (Rupert, McCord)	16/2:6-12
New Hill (Crumbley)	20/4:3-5	Salem, 1792 (Wiley)	5/2:7-8
New Lebanon (S. Troutman)	23/1:11-13	Salem, 1796 (Ed.)	6/2:24
Oberlin (Crumbley)	20/3:10-11	Salem, 1852-60, 1861-65 (Stroupe)	7/1:19
Octagonal postmarks (Schoolmeester)	6/4:3-5	Salem, 1833, new fancy cancel (Crumbley)	5/2:5
Ore Knob (Crumbley)	17/1:9	Salem, O. A. Keehln (Crumbley)	5/2:3-5
Ore Knob (S. Troutman)	18/2:14	Salisbury (Stroupe)	6/1:12-14
Oxford, 19th century (Mayes; S. Troutman)	12/3:3-14	Salisbury, prison (Crumbley)	19/3:4-6
Oxford, 2 orphanages (Crumbley)	26/1:13-15	Salisbury, prison (Harrison)	19:3:7-13
Oxford, Horner & Horner School (Ed.)	12/3:15	Salisbury provisional (Crumbley)	10/2*:8-11

Salisbury to Houston, Republic of Texas (Winter)	18/3:5-6	Wadesboro (Stroupe)	6/1:12-13
Salisbury to Leipzig, Saxony (Winter)	24/2:5-6	Wake County outside Raleigh (Crumbley)	20/4:3-5
Salvo to reopen? (Ed.)	12/4*:13	Wake Forest College (Crumbley)	20/4:3-5
Scotland Neck, 1797-1900 (McDowell)	7/4:3-8	Wanchese (S. Troutman)	26/4:8-10
Sandy Mush (S. Troutman)	20/3:12	Warren Plains, 1865 (Ed.)	8/1:20
Scuppernong (Winter)	24/2:12-13	Warrenton cover used as notepad (Sanford)	12/2:11
Self-inking postmarkers, "unofficial" (Stets)	7/2:3-6	Washington fancy cancel (S. Troutman)	13/3:15
Shalotte, 1858 provisional (Crumbley)	10/2*:8-11	Waterlily (S. Troutman)	15/3:8-9
Shipyard (S. Troutman)	25/1:12	Way Mail (Crumbley)	21/2:6-10
Siler City pseudo machine cancel (Homesly)	12/4:7	Wiles (S. Troutman)	11/3:3-4
Silver, Stanly County (Ertzberger)	3/3:1-2	Wilkesboro (Stroupe)	7/4:10-12
Smithfield, 200 years (Crumbley)	27/4:11-15	Wilmington, 7-bar killer on CSA 8 (Crumbley)	11/3:6
Smithville, Fort Johnston (S. Troutman)	24/3:11-12	Wilmington blockade cover (Crumbley)	20/2:10-12
Sneads Ferry (Troutman)	28/4:12-13	Wilmington, fast freight through (S. Troutman)	25/1:9
Sneedsboro (Crumbley)	14/1:4-5	Wilmington, first airmail flight, 1912 (O'Sullivan)	5/4:3-5
Snow Camp not in cyberspace (Brown)	24/3:14	Wilmington, blockade, frameline, mourning (Monroe)	21/4:11
Snow Hill, earliest known cover, 1803, mystery (Winter)	24/1:14	Wilmington, blockade mail through (Walske)	24/3:3-7
Soda Creek (S. Troutman)	16/4:14	Wilmington, hard times, 1865 (Ed.)	6/3:16
Sodom (S. Troutman)	15/3:9	Wilmington, largest known multiple, CSA 7 (Crumbley)	16/4:3
South Mills (S. Troutman)	23/11:11-13	Wilmington, lost stamps (Crumbley)	20/3:12-15
Southport, 1893 (Crumbley)	6/4:13	Wilmington to London (Winter)	16/4:3-5
Spencer (Stout)	6/4:12	Wilmington to Paris (Winter)	16/2:13-15
Springs of NC (Crumbley)	27/1:14-19	Wilmington, War of 1812 (Ed.)	6/4:4
Stanly County (Crumbley)	24/1:3-13	Wilson, express company label (Crumbley)	9/2:6-8
Stanly County, Silver (Ertzberger)	3/3:1-2	Wilson Creek Gorge, towns along (S. Troutman)	11/5:3-7
Star (Crumbley)	14/4:9-15	Winston-Salem (Wiley)	5/2:7-8
Statehood Bicentennial Cancels (Tilles)	26/3:8-12	Winston-Salem, postmaster's postmark (Crumbley)	23/1:15
Statesville (Stroupe)	6/1:12-14	Zevely handstamps (Mandel)	10/3:3-9
St. Lewis (S. Troutman)	21/4:3	<b>Union Occupation</b>	
St. Lewis (S. Troutman, A. Troutman)	9/3:6-7	6th New Hampshire (S. Troutman)	7/1:15-18
Straits (S. Troutman)	15/1:14-15	Covers (Bursey)	27/2:4-15
Swan Quarter (S. Troutman)	13/4:9-11	Fort Fisher, soldier letter (S. Troutman)	10/3:10-11
Swansboro (S. Troutman)	25/4:8-9	New Berne, contemporary accounts (Jaronski)	4/1*:1-2
Swansboro, redirected steamship cover (Winter)	26/1:6-11	New Berne, initial occupation (Jaronski)	4/1*:3-4
Tally Ho (S. Troutman)	11/2:11-13	Roanoke Island (Jaronski)	4/2*:7-9
Tally Ho, Allen family (S. Troutman)	11/2:13	Sherman's march (Crumbley)	17/3:3-5
Taylorsville, embossed (Crumbley)	14/2:10-11	Zouaves (S. Troutman)	24/2:3-4
Thomasville, embossed (Crumbley)	15/3:10-11	■	
Thomasville, embossed (Stroupe)	15/3:10-11		
Trap Hill (Crumbley)	17/2:8-11		
Twin City postal system (Wiley)	5/2:7-8		
"Unofficial" self-inking postmarkers (Stets)	7/2:3-6		
Updates (Ed.)	20/3:2		
Vance County (Perkinson)	2/4*:2-5		
Vance County (Perkinson)	20/4:9-11		